



OPUNAKE & COASTAL NEWS

Vol. 27 No 10, June 7, 2018
www.opunakecoastalnews.co.nz

Published every
Thursday Fortnight

Phone and Fax 761-7016
A/H 761-8206
for Advertising and Editorial
ISSN 2324-2337, ISSN 2324-2345

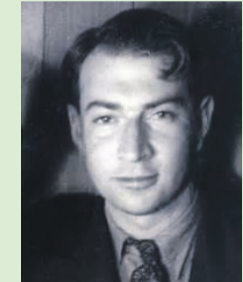
Inside



Fire Service to the rescue. Page 5



Where is Boddy. Page 9.



Literary Awards competition opens. p35



Who'll be this year's Mystery Creek Rural Catch. Page 25



Twenty five years at Mystery Creek. Page 27

Teachers meet prior to pay negotiations

Opunake High School teacher and PPTA Executive member Simon Reid delivered a hard hitting and comprehensive keynote address at a meeting attended by several hundred secondary school teachers frustrated by their working conditions.

The meeting was held at Stratford High School on Tuesday May 29 to prepare for forthcoming pay negotiations with the Government. Teachers from secondary and intermediate schools in Taranaki were well represented at the meeting, which was initially open to the media, but continued in committee after about 45 minutes when voting was the focus.

The top table included Rangiroa Ronganui who gave an opening address in Te Reo, Jan Torrey (PPTA Field Officer), Jane Benefield (PPTA Advisory Officer), Erin MacDonald (Taranaki Regional Chair PPTA), Angela Rob-

erts (Senior Vice President PPTA) and The PPTA (Post Primary Teachers Association) is the union which represents the employment interests of secondary school teachers, which number about 17,000 in the nation.

Erin MacDonald welcomed the assembled teachers and expressed the hope that the Government, in association with the teachers, could overcome problems such as teacher shortages and make the profession the desirable vocation it had the potential to be.

Simon Reid, who teaches at Opunake High School, explained that the PPTA needed the input of members and formal approval before their representatives negotiated with the Government. What was at stake was the Secondary Teachers Collective Agreement, which will be negotiated with the Ministry of Education. The collective

support of teachers was essential because, "... while

one teacher may be easy to ignore, bully or replace, it's impossible to ignore, bully or replace 17,000 of us." He added, "We are all in this together and, united, we are formidable."

Simon outlined several problems which are facing the profession at present such as teacher shortages fuelled by resignations, an aging profession, too few applicants for vacancies, not enough relieving teachers, a lack of skills in specific educational areas - against a background of significant roll growth and class sizes, as well as excessive workload. A PowerPoint presentation projected a series of graphs to illustrate Simon's assertions. "Reversing the tide means big improvements in our profes-

sion so we can attract and retain teachers. We must make the job manageable and the remuneration competitive." The top salary scale needed to be increased by 15% to \$89,700, he explained.

Simon pointed out that the pay claim rested on two main planks; *firstly*, fixing the teacher shortage and *secondly*, eliminating excessive workload.

He explained that secondary teachers had lost their relativity with other vocations. "Teaching has clearly become less financially rewarding since 2004, with the top of the base scale dropping from 1.8 times the median wage to just 1.5 times the median wage."

Continued page 5



Simon Reid, Taranaki Executive member PPTA, giving a hard hitting address.



Secondary teachers at the May 29 meeting at Stratford High School.

Twelve whales beached at Kaupokonui

It will probably never be known for sure what happened to 12 whales washed ashore at Kaupokonui Beach.

Eight adult sperm whales were found on the morning of May 24. Four more were found further along the coast the following weekend.

"We assume (but can't know for sure) the 12 whales probably all washed up at roughly the same time but the latter four were just found later, the 12 being strung out along about 5km of coastline," DOC communications advisor Des Williams said. A Massey University veterinary pathologist said necrop-

sies wouldn't be carried out as the whales had been dead for at least 36 hours and were starting to decompose.

Security at the entrances to the beach were stepped up after the stranding. One of the carcasses had been mutilated by thieves who used an axe to take four teeth from the upper jaw.

Des Williams said DOC staff took standard samples and measurements from some of the dead whales, but these are unlikely to reveal the cause of death.

All species of marine mammals occurring in New Zealand

Continued page 3

COASTAL MACHINERY SALES REPRESENTATIVE

JOHN JUDGE

Phone
027 538 7387
06 757 5582

For all your machinery enquiries

NORWOOD 146 GILL ST
Farm Machinery Centre NEW PLYMOUTH
PH 06 757 5582

See us online at www.opunakecoastalnews.co.nz

IN STORE NOW Winter Warmers!

- Thermos Flasks
- Polar Fleece Throws
- Children's Ear Muffs & Thermals
- Beanies
- Ski Gloves
- 'Snug' Slippers & Boots
- Hot Water Bottles
- Heaters
- Doormats
- Scented soothing bags
- Fleece onesies
- Fleece sweatshirts



At your Local Supermarket



4 SQUARE 45
77 TASMAN ST
OPUNAKE
06 761 8668
Open 7am to 9pm EVERYDAY!

FOR ADVERTISING OR EDITORIAL PLEASE PHONE/FAX (06) 761-7016

"Let's create your business growth strategy together"
Your only local community accounting firm



HUGHSON & ASSOCIATES

Accounting for the future, today

Hawera - Opunake - 06 278 4169

OPUNAKE OFFICE

OPEN EVERY WEDNESDAY FROM 10am TO 3.30pm



Letters to the Editor

Send your your views to:
Letters to the Editor
23 Napier Street, Opunake.
Fax: (06) 761 7016

email: editorial@opunakecoastalnews.co.nz
You are welcome to use a pseudonym but must supply your name and address to us.

Freedom camping

Gud on ya' Opunake and Coastal News for examining with an open mind freedom camper issues. I agree with you. A negative mindset (we don't want your kind around here) will only produce prejudice and hostility.

Younger freedom campers on an OE will return when they are older and have jobs earning more money. Sure there are issues, but some of the opinions I hear when I visit Opunake are quite nasty and hostile in my opinion. A coin has two sides.

*A concerned resident
New Plymouth*

Same rules and regulations set down for our freedom campers

Everyone in our province is fully aware that, since the debate of freedom campers has arisen, it's become an extremely hot topic throughout our province and maybe in other provinces too.

Look, every town in Taranaki welcomes visitors meaning our freedom campers. To me, must now happen is that every town, village and our city must have one set of rules and regulations set down, otherwise it could become one horrible unforgiving total mess which must not happen at all.

When these freedom campers do visit they must go to our local police station or i-site, be given a list of instructions of each town's rules and regulations and given a map showing them where they can and cannot go, while in the meantime our local police stations are in contact with each other. These freedom campers must give the registration number of whatever vehicle they have when they leave, as well as their names, so that if they misbehave, they can then be fined and told to move on and not come back.

*Tom Stephens
New Plymouth*

Keep out of our Moana TTR

I went to the hearing in New Plymouth where interested parties put forward their vviews re extraction of 50 million seabed material/ironsand per annum from the South taranaki Bight.

There were very few parties that supported TTR, mining our Moana for ironsand etc, so I don't understand how on April 16, 2018 a four day hearing kicked off in the High Court challenging the Environment Protection

Authority appointment committee's decision to grant a marine consent to Trans Tasman Resources to complete offshore iron mining projects.

Ninety nine per cent of the speakers at the hearing (New Plymouth) opposed seabed mining in our Moana (Taranaki Bight) and the general consensus was that mining in the Bight would not do much for local employment as there would be lots of workers doing a FIFO or DIDO (drive in, drive out). One speaker from Auckland said that all the district would attract would be a takeaway meat pie, a taxi ride (to the airport Etc) or a trip to the local brothel on someone's way out of South Taranaki.

I feel that decisions like this should go to a referendum where the public/Iwi can decide the fate of ther South Taranaki bight and the killing of our dolphins etc.

I wonder how many more of our millions will be spent at the high Court now challenging a negative decision concerning our Wai and/or Moana.

Not very happy about this.

*Yvonne Wara Ward
Opunake*

Not a bad dog but a bad owner

Just over a month ago an adult male was attacked by a dog that had jumped over the front gate. This dog was roaming around town unsupervised as well.

My point is: if someone is going to be responsible for a dog then tie the dog up or put the dog into a kennel with a run if it is able to jump out of his/her yard. Part of owning adog should be a daily walk, brush, appealing food (not just dry biscuits), worming, vaccinations.

The dog was euthanized as the result of being an adult. This person then needed to get a tetanus shot at \$75.

I don't know if I agree that dogs should be put down immediately although it was quite a severe bite. I think that some dogs should be given a second chance and that the owners should be prosecuted. If this dog had been trained, walked and secured in its yard, this may not have happened. Dogs are capable of being restrained. I blame this on the owner, not the dog.

*K9 lover
Rahotu.*

The Bight of AMBERGRIS.

Travelling north from Hawera towards Opunake along the Surf Highway 45 on a Monday afternoon at the

end of May. I slammed on the brakes as the car approached the turn-off to Kaupokonui Beach Motor Camp and River entrance.

I had heard over the radio last week a pod of sperm whales had beached on south coast Hawera. Over the weekend news had come through seven sperm whales were dead and nothing could have been done to save them. Local Iwi and Department of Conservation were following protocols and blessings had been carried out. Approaching the cliff top entrance to the motor camp provided the first view of numerous vehicles, and security located in prime locations. This was a bigger deal than I had first thought.

Arriving in a full carpark near the river edge, proved even more daunting with *Danger* tape, and signs of caution over the bridge leading up the sand dunes. This was a historical first for me. Following the landscape and activity led the attention to one obvious carcass on the high tide mark, with two contrasting and out of place diggers. Heavy machinery would be needed to dig big enough trenches and graves for these magnificent beasts of the ocean.

What struck me first however was the serene, but somewhat disruptive atmosphere created by a strong Southerly gale whipping across the sand dunes. Pelleting the face and jacket like warning shots, to stay well clear.

The tribe, and team of warriors dressed in matching fully fitted out yellow PVC wet weather gear and slaughterhouse gum boots again contrasted the dark ominous carcass of a large single male sperm whale. Its butchered length cut up into squares for easy carrying. One young and tall strong Maori man carried a large unrounded ball to the trailer. Thoughts went back two hundred and fifty years ago to the whaling days of New Zealand. This would have been a daily activity for a crew of men on the shores, with hundreds if not more slaughtered for their oil, meat and bones discarded upon the shore. The methods exactly the same, but oil skins would have been worn instead of bright dandelion yellow pvc. How they put up with the stench, beats me. Money is the answer, and the prize. And it still remains today.

The jawbone, teeth, and what is called ambergris are sought. Ambergris is worth \$ 1,000s of dollars per ounce. Ambergris is used by French perfume manufacturers for 'the nose.' Allowing perfumes to attach their scent

on the body. This seems in direct contrast to the stink perpetuating from the west coast shore. Crossing the bridge once again waiting in a line the tribe queue to be Water-blasted down. Then the hero comes off the trailer. It looks like a deflated tire and tube, but that unrounded ball, must be worth close to one million dollars, if not more.

Trust must be left with the guardians of the ocean, and solace wept for the mammals that have ungainly found their way upon these shores. Was it a combination of large southerly swells, cold arctic storms riding along the coast with terrific thunder storms, and lightening charging the earth's atmosphere. The magnetic attraction of Mt. Taranaki. The high tides and full moon crescent reflecting upon The Bight.

We will never know.

But there is one thing for sure, nothing has changed in two hundred and fifty years.

*John Smith
Opunake*

Revitalising history

Some time ago I wrote about trying to save our historic buildings if it's possible. Well, it seems this has happened as a new manager from Auckland in Gurkirat Singh joined assistant manager Jagjeet Singh and chef Akash Thakur have not only bought Hawera's Morriesons Café Bar but have retained the literary history of Taranaki's best known author Ronald Hugh Morrieson and kept his legacy alive.

It now seems they have upgraded this restaurant's menu, drinks, different types of cocktails, whisky, the best brands of wines and provision for local crafted beers on tap, even modernised the café bars frontage while management have ideas of bringing in Sky TV, extra seating, new carpet and many more new ideas which is really neat, plus having live music.

Now this is what I've been talking about as there's no reason whatsoever to really demolish any historic building, only if its ultimately necessary or it does become something of a liability to any city, town or village anywhere in New Zealand, so full marks to these new owners as Hawera is extremely lucky to have them, as they know the value of historic building which can be re-modernised to a point.

*Tom Stephens
New Plymouth*

Headstone Warehouse

WHERE YOU GO FOR HEADSTONES

33 High Street,
HAWERA - Ph: 06 278 5518

209 Coronation Ave,
NEW PLYMOUTH - Ph: 06 759 9975

www.HeadstoneWarehouse.co.nz

EXCEEDING THE STANDARD SINCE 1914

RENTAL VEHICLES



• CHARTER BUSES

• VANS

• TOUR BUSES

ALUMINIUM SCAFFOLDING FOR HIRE

\$35 per day, \$50 weekend.

More than 6 days \$30 per day.

WATERBLASTER FOR HIRE

Petrol 3000 psi 15L/minC

Cost: Half day \$90, Full day \$120, Weekend \$130. Friday after 3pm return Monday 9am.

Bond for waterblaster and scaffolding \$50.

For more information contact Tracey or Christine at

PICKERING MOTORS

11 TENNYSON ST OPUNAKE PH (06) 761-8363
0800 22 11 20 Email: pickering.motors@xtra.co.nz

OPUNAKE & COASTAL NEWS

Registered office: 23 Napier Street, Opunake
PO Box 74, Opunake

Telephone and Fax: (06) 761-7016 a/h ph: (06) 761-8206

e-mail: Advertising ads@opunakecoastalnews.co.nz
Editorial editorial@opunakecoastalnews.co.nz
Accounts accounts@opunakecoastalnews.co.nz

website: www.opunakecoastalnews.co.nz

Editor: Bernice M^cKellar -

Journalists/Sales: Rolland M^cKellar

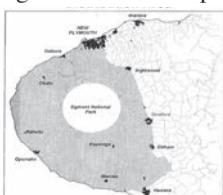
Bryan Kirk

Advertising/Production: Vanessa Smith

IT/Production: Shane Butler

Delivery: Thursday, fortnightly

Registered as a newspaper.



The Opunake and Coastal News is distributed free to every home and business within the rural area bounded in the north by the New Plymouth city border, extending east to Egmont Village, and around to the edge of Stratford, south to the Hawera city border and inland to Kaponga and through Eltham.

Twelve whales beached at Kaupokonui

Continued from page 1.

land, and New Zealand's fisheries waters are absolutely protected under the Marine Mammals Protection Act 1978 and it is illegal to take any parts of a dead marine mammal without a permit, he said.

"The Department is responsible for the protection, conservation and management of all marine animals and it carries out this work following protocols agreed with local iwi/hapu."

Members of the Ngati Tu hapu camped out on the beach and assisted by DOC staff and a team from the Ngatiwai hapu from Ngapuhi in Northland got to work stripping decaying flesh from three of the carcasses and extracting their bones prior to the carcasses being buried.

The team from Ngatiwai included expert Hori Parata and a team of flensers.

Ngati Tu spokesperson Bonita Bigham said Ngatiwai had helped them recover knowledge which had been interrupted due to colonisation and the reduction in whale numbers resulting from over-whaling.

"Individuals with our hapu and iwi remember the occasional stranding stretching back many decades, but my mum is 90 and never in her living memory can she remember anything happening like this or any of her old people talking about this



Members of the Ngati Tu hapu assisted by DOC staff and a team from the Ngatiwai hapu got to work stripping decaying flesh from three of the carcasses and extracting their bones prior to the carcasses being buried.

either, so korero and stories about them have probably been forgotten over time and they haven't been part of our recent hapu narrative, but they sure are now," she said. "As we understand it, this probably wasn't such a rare event for our ancestors, so they knew exactly what to do when it happened."

She says all parts of the whale could potentially be used.

"In an ideal world everything would be recycled into

something else - the bone for carving and in particular the jaw has huge significance, the meat if the whale is fresh enough, the innards can be turned into fertiliser for gardens, the blubber can be rendered down to produce oil, the spermaceti is the fine oil in the head which also where the name sperm whale comes from, the sinews and tendons can be used for rope and cordage. So in reality the whole whale can be utilised in the right conditions."

"No decisions have been made by the hapu as to what will happen with any of the resources, but eventually it's anticipated that the bones may be used for carving where suitable.

"We've been offered assistance from master carver Rangi Kipa to wananga with us when we are ready to embark on that next journey, with the transmission of knowledge to future generations a priority. Where and how the taonga will be

created and distributed are conversations for the future."

With help from Ngati Wai they have been able to get as much as possible from three of the whales, including bones and oils, which could be used for generations to come, she said.

These three were buried during the weekend and Ngati Tu and neighbouring hapu Ngati Haua are looking at what can be done with other carcasses on hard to access beaches.

"All the whales were given names because to us they are ancestors, our relatives, part of our whanau, hapu and iwi," says Bonita. "We named them and recognise each of them for the gifts they have brought to us, which are not just on the beach from their bodies."

The names reflect significance to Ngati Tu, she said.

"We talk about them as we would a human, again to reinforce our whanaungatanga (familial relationship) with each of them."

Des Williams said three of the whales were accessible enough to be buried, but because of the location's inaccessibility for digging machines, the rest have to remain on the beach to let nature take its course.

"Three of the four later strandings were in the rohe of neighbouring hapu, Ngati Haua, who have protocols that differ from those of Ngati Tu and DOC staff responded to these different protocols with Ngati Haua hapu representatives," he said.

"The stranding operation from DOC's point of view and involvement was 'done and dusted' on Sunday 3 June 2018."

Mass strandings of sperm whales on New Zealand coasts are relatively rare. There have been 13 known cases of mass strandings of sperm whales since 1895, with the largest in 1974 at Muriwai, when 74 sperm whales stranded. The reasons for these strandings are unknown, Des said.

Adelphos

Adam and Eve and the Humpty Dumpty fairy tale have something in common: both had a great fall. As a result, according to Judaism and Christianity, we today live in a world morally coloured in fifty shades of gray. Since the fall, both our physical, moral and spiritual DNA have been negatively affected.

But surprise! Humpty's fall was not necessarily as an egg. There's a legend that Humpty Dumpty was the nickname for a huge cannon used during the English Civil War (1642-51). Humpty the cannon was stationed on the roof of St. Mary's on the Wall church in the walled city of Colchester, England to protect the church and the city from

I love Fairytales

Lord Fairfax's Roundheads The Roundheads fired on the church's roof and ole Humpty came tumbling down and couldn't be lifted back up by all the king's horses and men.

Jesus believed that Adam and Eve were created as real thinking people—not fairytale figures or a bacterium that somehow evolved and changed from one species to another over millions and millions of years. Jesus spoke authoritatively when he said, "At the beginning of creation God made them male and female" (Mark 10:6). He even referred to Adam's real son, Abel (Luke 11:51). Remember, that in the gospels, this Jesus publically resurrected three "very" dead people

and supernaturally "created" dozens of miracle healings to prove the authority of his words.

When our intelligent and Creator God created and designed Adam he said, "Let us make man in our image". The Hebrew word "our" is "elohim". It is a possessive pronoun that refers to the Father, the Son and the Holy Spirit. This means that Jesus was present as part of the Trinity and active in the "... creation of all things in heaven and on earth" (Colossians 1:16)! Remember that Jesus confidently called himself the eternal pre-existing "I am" of the Old Testament (John 8:58). So when Jesus said, "At the beginning of creation

God made them male and female" he was present not just as an eyewitness, but he was a participant in the creation of Adam, Eve and all things.

Historically scientific evolutionary journals have often used terms like, "it seems, possibly, could have, might, it is likely" to prove evolution. Today, however, these terms are less frequently used because Darwin's fairytale theory is now accepted with "gospel" certainty in the

scientific and educational communities. One wonders which gospel creates more hope and faith for humanity's future—that of Jesus, as a loving Creator God, or Darwin's chance evolution from a single celled bacterium?

The theory of evolution began to "evolve" in the 1850s... To be continued in part 2 in the next edition of the Opunake and Coastal News. But I'll leave you with a preview, "In what manner

the mental powers of the lowest organism first developed is as hopeless an enquiry as to how life itself first developed. These are problems for the distant future" (Charles Darwin, *The Descent of Man*, 1871, p. 100).

Adelphos P.S. RIP Humpty. And oh yes, remember to worship your Creator God in your Opunake and Coastal News readership churches this Sunday.



BRIAN HILL

BD HILL BUILDING


- *New homes
- *Alterations
- *Rotary cowsheds
- *Herringbone dairy sheds
- *Concrete driveways
- *Bridges
- *Pre-cast silage pits
- *Hay barns & implement sheds
- *Concrete races
- *Repair work

We are a licensed building practitioner and Master Builders member. Experienced in the design and consent process.



0274 442 703





CITY PRICES AGAIN!

SPEND \$40 ON FUEL

Put your receipt in the box and

be in to **WIN \$100 IN PETROL VOUCHERS**

One lucky winner each week for the next four weeks starting 28 May 2018

HEYDON PRIEST LTD

OAKURA

SERVING THE COAST FOR 68 YEARS

Route 45, Taranaki's Main Street, Oakura
Ph: 06 752 7753. Open 5.30am-10pm every day

COUNCILLOR'S COMMENT

New Bridger Park entrance on its way



MAREE LIDDINGTON

Utanganui, which was supported in principle, was held over so that a more detailed report could be considered.

The Council's Rural Halls Fund was also increased from \$20,000 to \$40,000 per annum in response to submissions from rural hall committees who are facing increasing insurance costs and \$30,000 was included to support the maintenance of walkways throughout the District.

Council proposals for its Waste Management and Minimisation Plan, inclusion of an additional \$500,000 for district walkways and cycleways and amalgamation of the Inaha and Waimate West rural water supplies were also approved after receiving strong public support.

I presented submissions to three councils on behalf of Eltham Community Board and Kaponga Progressive Group and this was an interesting experience. The main project that the Kaponga group presented was the proposed walkway from Kaponga township to Hollards Gardens. This would involve the three Councils; South Taranaki, Stratford and the Regional Council. Our proposal was



Proposed new carpark area.

well received, but no one jumped up and said 'here's the funds, go do it'.

It doesn't happen like that, unfortunately. Gone are the days when a community had a good idea, rallied support, and got out and 'just did it.' Going back in time that was what happened in the creating of many of our parks and green spaces. Times have changed and we have to plan, consult and consider many factors nowadays. With the additional \$500,000 set aside now for walkways and cycleways, here's hoping we have a strong case for some developments in the Eltham/Kaponga ward.

The Council's purchase of the sections in Bridge Street has now been finalised. Plans for the development of a new,

more visible park entrance for Bridger Park have now been drawn up, in consultation with the Parks and Reserves manager Phil Waite and head gardener, David Bruce.

Stage 1 of the project will be the levelling of the site and establishing three new carparks off Bridger Lane. A flat paved area will flow off street level and on down to lawn which will lead the eye down to Bridger Park. This will be edged with garden beds and planting. Stage 2 will involve installing picnic tables and artworks. This project has been funded jointly by the Eltham Community Board and Fonterra Grass Roots Funding.

Maree Liddington
Eltham Community Board



Bridge St sections which will be developed into a new entrance for Bridger Park, Eltham.

● New Houses ● All Farm Buildings
● Alterations ● Kitchens
● Roofing ● Decks

For all your building requirements, contact us today

HEARTLAND CONSTRUCTION
48 Allison Street - Opunake - Taranaki - Phil on 027 236 7129

*HEADSTONES * GRANITE PLAQUES
*CERAMIC PHOTOS & PLAQUES

STONE CREATIONS NZ

stonecreationsnz@gmail.com
www.stonecreations@kiwi.nz

0508 763 84 37
Forever Memories Your Way

Creative Centre & Showroom
25 Upper Pitone rd
off Surf Hi way 45 - New Plymouth



DAWSON FALLS
MOUNTAIN LODGE & CAFE

WHEN WAS YOUR LAST VISIT?

Book or visit us today!

www.dawsonfalls.co.nz

Phone: 06 765 5457

Cafe open every day 10am - 4pm

Book for lunch or dinner for your group of 2-50 people in our restaurant.

The last month has been a busy one for our councillors with the hearing of submissions to the Long Term Plan and then deliberations on those requests. There is never enough money in the pot, and this year was no exception with requests for over \$620,000.

Given this, Council had to make some hard decisions about where funding went, which they did, and the end result was that an extra \$105,400, would be incorporated into our Long Term Plan budget.

A request from the South Taranaki District Museum Trust for a one-off grant of \$285,000 to go towards Stage 2 expansion of Aotea

LAWYERS

OPUNAKE LAWYERS Thomson O'Neil & Co.

Our Opunake Office is attended by:

Robert England on Wednesday & Fridays
for buying and selling houses, farms & businesses;
Trusts, Wills and Estates.

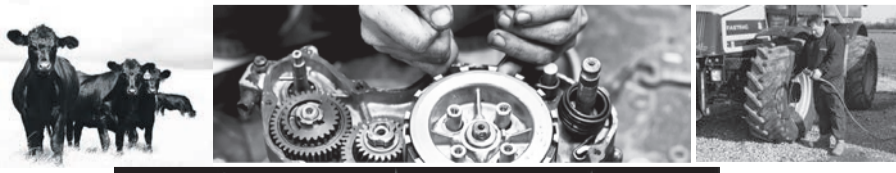
Mark Utting on Thursdays
for buying and selling houses, farms & businesses;
Trusts, Wills, Estates and refinancing matters.

FOR ALL YOUR LEGAL REQUIREMENTS
30 TASMAN ST, OPUNAKE
PH: 761 8823

FIELD SERVICE FOR TRACTORS & FARM MACHINERY

- ✓ **Tractor punctures done on site.**
- ✓ **Mechanical repairs on ATV's - Motorbikes Motor vehicles etc**
- ✓ **Tyres available for Cars - Bike tyres - Atv & Utv tyres**

Come in and see us for all your requirements. We look forward to being of assistance.



AGRIMEC AUTO LIMITED

38 IHAIA ROAD, OPUNAKE

PH: 06 761 8999 * CELL: 027 722 1192 * A/HRS: 06 761 8946

On this month in history

Dog rescued

A small dog fell into Opunake Lake on Tuesday June 5 around midday and was unable to get out. Opunake Volunteer Fire Brigade were at the location very quickly. The dog seemed to have disappeared under growth on the side of the lake, not too far from the Cottage Rest Home.

The fire-fighters had the dog safe within minutes, although it was necessary to get in the water to secure the rescue.

Wally, the small dog, is a four-year-old poolie chihuahua and his lady owner was relieved and very grateful. His half hour ordeal had left him wet and presumably cold, but otherwise unharmed. The owner described the efforts of the Opunake Volunteers Fire Brigade efforts as "fantastic." She was keen to get Wally home to be dried and warmed up.

RIGHT:

Andrew Pentelow from the Opunake Fire Service in the lake. The little dog was retrieved shortly afterwards.



George Leigh Mallory born

On 18 June, 1886 George Leigh Mallory was born. He tried three times to climb Mount Everest.

On his final attempt he was last seen on June 8, 1924 with his climbing partner Andrew 'Sandy' Irvine approaching the difficult second step of Everest's north face. A cloud came over and they were never seen alive again.

After 75 years buried in ice George Leigh Mallory's petrified body was found in May 1999. He had a broken rope around his middle and snow glasses in his pocket; he must have fallen to his death in the dark or near dark.

When Sir Edmund Hillary climbed Everest in 1953 he had a look around to see if Mallory and Irvine had preceded him, but saw nothing of note.

Michael Campbell wins US Open

On June 19, 2005 Michael Campbell became only the second New Zealander (Sir Bob Charles won the British Open) to win one of the golf majors, when he beat Tiger Woods by two strokes.

His four round total score was 280, to Tiger Woods 282. The venue for the event was the Pinehurst course in North Carolina. Michael was ranked just 80 in the world and he never won another major, despite saying he intended to do so.

The majors include the US Masters, US PGA, US Open and British Open.



14 TOYOTA YARIS/VITZ
2 to choose, 1.5, 35kms
\$14,990



08-10 MAZDA DEMIO
1.3-1.5, 4 to choose
From \$9,590



14 MAZDA 6, 2.5L, Wgn
NZ, 6spd auto, Pearl
\$17,990



11 NISSAN JUKE
1.5, CVT, Red, Auto
\$15,990



94 TOYOTA LANDCRUISER
164kms, 4WD, Diesel
\$22,990



CHEVROLET TAHOE 4WD
5.7L V8, Met black, 98K
only, lift kit, super
genuine/original, \$27,990



96 TOYOTA HILUX SURF
3.0L, Diesel, Auto
\$13,590

SUPERIOR CARS & 4WD's Ltd

Ph: 06 759 9992

www.superiorcars.co.nz

Teachers meet prior to pay negotiations

Continued from page 1

The pay claim also seeks a boost in units and management allowances. "... to increase unit values and middle management allowances and senior management allowances to \$1500, which is an increase of 50% on each of these."

In some locations such as Auckland, Wellington and the Queenstown Lakes high accommodation costs are leading to "significant teacher shortages." Some accommodation support is sought up to a level of \$100 per week.

More non-contact (with students) time is sought. "Teachers are under immense pressure from the volume and complexity of work they are required to do and it's having a significant impact on our health and wellbeing," commented Simon. An additional hour of non-contact for all full time teachers is sought, which will ensure an increase to six hours. Furthermore, "All teachers holding one, two of three permanent management units would receive a further hour of non-contact time for their management duties."

A shortage of Maori and Pasifika teachers needs to be addressed. The claim seeks improvement to having one position per 100 Maori and Pasifika students. Each position would receive a two hour per week time allowance and a payment of \$6,000 per annum. (Extensive consultation will be carried out with representative groups to develop appointment guidelines).

Other core claims include the Ministry continuing to pay the Education Council's practicing fees. Also, to increase the Maori Immersion Teachers allowance to match

the same allowance enjoyed by Primary Teachers and Area School Teachers in their Collective Agreements.

Simon concluded by stating that the pay and conditions agreement to be for one year only. He requested that members vote to endorse the core claim at the meeting. Next, they need to ensure each branch meets by June 29 to

discuss any possible extra claims. The PPTA website can be consulted for guidance and resources, he said.

He conceded that not all of what is sought will be attained. "We need to plan for the worst and hope for the best."

He finally urged members to keep closely in touch. He mentioned the email address:

stca2018@ppta.org.nz, [Twitter@PPTA-web](https://twitter.com/PPTA-web) and facebook group for PPTA members only.

"I look forward to hearing your questions and thoughts on the campaign, the strategy and the proposed claim."

The media were asked to leave, the meeting went into committee and members voted to endorse the pay and conditions claim.

CARING FOR YOUR COMMUNITY



INGRAM'S
PROUD TO BE LOCALLY OWNED & OPERATED

PHONE
(06) 278 4786
Bin & Skip Hire

BTW COMPANY

SURVEYING | ENGINEERING | PLANNING & ENVIRONMENT

Subdivision and Land Development
Civil and Structural Engineering
Planning and Consenting
Environmental Services
3D Laser Scanning and UAV's
Project Management

See our website for full range of services

0800 289 787 | www.btw.nz

New Plymouth office
179-181 Courtenay Street
PO Box 551, New Plymouth 4340
+64 6 759 5040

Hamilton office
517 Anglesea Street
PO Box 1229, Hamilton 3240
+64 7 595 0020



OPUNAKE COPS

Farm thefts being investigated

Winter is officially here and with that comes the great migration of farm workers as they all move around the area to the next venture.

Unfortunately at this time of year we receive a spike in rural thefts and burglaries. Farm bikes, quad bikes and tools are all on the rural burglars shopping list at the moment. This is when the rural community is its own best security. Neighbours need to keep an eye on each other's property. Most of you know the people who frequent your area and the vehicles they drive. If anyone or anything looks out of place please take note of them and their cars as placing someone in the right area at the right time can sometimes be the final nail in the coffin as far as evidence goes to catch them. Please keep in mind that if someone offers to sell something to you at a price that is too good to be true then it most likely is. Don't help these "people" by taking stolen property off their hands. What they give you with one hand they are just as likely to take away with the other.

With this Police are currently investigating the



CONSTABLE KYLIE BROPHY

theft of a large amount of diesel and petrol from a property on Patiki Road. Of interest, Police in Waitara are investigating the recent theft of a fuel tank stolen from a local contractor and this trailer may have been used in the theft of diesel and petrol from the Patiki Road address. Police have arrested two residents from Rahotu after a large amount of property from a number of recently reported burglaries was recovered at their dwelling they had recently moved to. Both persons are currently before the courts and further enquires are continuing with the probability of further charges. Both Matt and myself would like to thank the many Rahotu locals that have provided information in regards to these two persons.

I would also stress to all road users, remember to drive to the conditions. We haven't had too many accidents on our roads of late and we would like to keep it that way. Remember to wear your seatbelt. Still a few of you out there throwing it on when you see us. No good I'm sorry. Put it on when you get in the car. If we see you reaching for it just because you see the Police car expect to get a ticket.

We continue to receive numerous complaints about speed people travel through Rahotu especially past Rahotu Primary School during drop-off and pick-up times. Expect a ticket if you are stopped in this area if your speed exceeds 40km/h past the school during these times.

With the current Government suggesting an increase of boots on the ground I have taken a small excerpt from the New Cops page for any keen or interested people to peruse over.

First up, forget all those stereotypes. We're not looking for cookie-cutter cops. We value who you are and what you could bring to the job as an individual. The strength of our team comes from a diverse range of people, each with different backgrounds, experiences and interests, working towards the same goal.

All you need to apply is to: Be at least 17 years old (must be 18 before you can start at police college). Hold

a full NZ driver licence. Be a New Zealand or Australian Citizen or NZ Permanent Resident. Be available to attend constabulary recruitment assessments in person. Be physically fit and in excellent health. Notify constabulary recruitment staff of any previous criminal or traffic convictions (including warnings, court appearances, and diversions). Provide police clearance for any country (other than NZ) that you have worked or resided in for longer than three months.

The bottom line is that to become a cop you need a strong desire to help people in your community. You'll need to be able to make tough judgement calls, build community networks, and instil confidence in those around you.

Our role can highly

influence the lives of many in our communities. Hence our constabulary recruitment staff will also be looking for the following qualities throughout the constabulary recruitment process: excellent communication skills, empathy for others, loyalty, commitment, integrity, and problem-solving abilities

Solving crime and preventing crashes is not just about answering the question 'who?' It's just as important to look at the broader question of 'why?' You'll need an ability to understand the communities you serve, and more importantly, the ability to identify and examine the problems that lead to trouble.

Don't lose who you are

We welcome applications from anyone who has what it takes, regardless of height, gender, ethnicity, culture, sexuality, or faith. To better

reflect New Zealand's growing diversity we want you to bring your background, culture, and values to the job.

We are actively seeking applicants with an understanding of different languages and cultures. There are no specific subject requirements or prerequisites to apply. However, having qualifications could make you a stronger applicant and open doors later in your career when you want to specialise in different police roles. Don't worry about your height, as there are no minimum height requirements. That's about it from us, stay safe and look after each other out there.

Remember, if you have any information for us call ion to the station we are more than happy to help. Alternatively you can call Crimestoppers at 0800 555111 with all anonymous information.

CRIMETRIANGLE 01/06/2018

Rural Burglaries

There has been a recent spate of rural burglaries in Taranaki where tools, motorcycles and fuel have been targeted.

A burglary on Patiki Road Pihama overnight 30-31/05 had 940 litres of diesel and 460 litres of Petrol stolen along with a number of other expensive items, given 70 x 20 litre containers would be required to carry off this amount of fuel it is likely some sort mobile fuel tanker would have been used.

On 27/05 a Fuel tanker (The same as below pictured) was stolen from Darcey Keene Contracting in Waitara.

It is likely that this stolen trailer is being used to move stolen fuel.

Can staff please note and tip out any vehicles towing a tanker like this

Stratford
Mowers & Chainsaws

Servicing all of your outdoor power needs

Danny Mcsweeney
146 Juliet Street, Stratford 4332
PH: 06 765 6770 - A/Hrs: 027 87 87 225
E: stratfordmowers@xtra.co.nz

SUSANNE HIPPI ACCOUNTING LIMITED

Susanne Hipp

If you find yourself spending too much time on administration/ accounting and not enough on what earns you money, it is time to call **Susanne Hipp Accounting.**

Phone: 06 928 5608
Mobile: 027 610 0270
191 High Street, Hawera, 4610

www.shaccounting.co.nz

Facelift for famous Taranaki photo spot

The deck on the Main Lake in NPDC's Pukekura Park will be extended to enhance the awesome views towards Mount Taranaki.

The work is part of a NPDC project to upgrade the landscaping between the Tea House On The Lake and the lake, and will include a gazebo for shaded seating, new planters, the levelling of the tiled area and footpaths that are safer and easier to use.

"This facelift will mean an

even better experience for the 470,000 people who flock to NPDC's free Pukekura Park each year, including the 130,000 who come for the annual TSB Festival of Lights. New Plymouth's founders had the foresight to create such a fantastic project in 1876 and a great recreational hub for locals and visitors alike," says Jacqueline Baker, NPDC External Relations Manager.

The public may notice work in the area and NPDC thanks visitors in advance for their

patience. The work programme is expected to be finished by the spring.

Pukekura Park has flown the Green Flag, the international mark of a quality park, for five years running.

Experts assess a park for a Green Flag award using eight criteria, including horticultural standards, cleanliness, sustainability, community involvement and providing a warm welcome. The Tea House On The Lake, which opened in 1931, will remain unchanged.



Above: Artist's Impression of new extensions at Pukekura Park, New Plymouth.

POWERWORX

Power Supply Rural & Residential

Design, upgrade and repair overhead and underground power supplies

- Powerco Approved
- Underbores - wires and pipes
- Powerline maintenance
- Fault repair
- Subdivision power installation
- Vegetation control around powerlines
- Network connections
- Transformer & line upgrades
- Specialists in rural power servicing and installation

0800 877 746

Taranaki Region
Contact Bruce Wilson Manager
58 Glover Road, Hawera Ph: 06 278 4514
Email: powerworx@obertech.co.nz

CRAWFORD

AGRITECH Ltd

TRACTOR & MACHINERY SERVICE & REPAIRS
ON FARM SERVICING
AIR CONDITIONING SERVICE, REPAIRS AND HOSE MAKING
SPARE PARTS & FARM OILS
IMPLEMENTS & ATTACHMENTS - SALES AND SERVICE
FACTORY TRAINED TECHNICIAN
TARANAKI & WANGANUI INDEPENDENT FERGIE TRACTOR SPECIALISTS

Ph 06 762 8023
Ian Crawford
Mob 0272 207 701

MASSEY FERGUSON | FORD | SAME | LANDINI | SEKI | VALTRA | MATBRO
INTERNATIONAL | MERLO | DAVID BROWN | RENAULT | URSUS | JOHN DEERE

MORRIS LUBRICANTS
the winning formula since 1869

An incident-free fortnight for Opunake Brigade

Congratulations Opunake and District for having an incident free fortnight. Yes, there hasn't been a call out since May 17, so pat yourself on the back. Even in the shocking weather conditions you have managed to keep your vehicle pointed in the right direction. I'm sure Nigel from the Road Patrol Team is over the moon with this result as well. Keep up the good work and stay focussed while driving. I have been to many accidents on the Coast and a number of them have been caused by the driver trying to do something else instead of "just driving." These include changing a CD (smashing into a letter box and fence at Oaonui), eating fish and chips (putting a trailer unit on its side at Oeo) as well as the big one, talking on the cell phone (twice on Main South Road).

You often hear about cell phones causing accidents but a lot of people still do it. There is an \$80 fine if you are caught doing this but it still doesn't deter some people. So let's keep off the cell phones, and let's concentrate on driving so we can have another accident free fortnight.

I was asked to go and speak to a group of elderly locals about smoke alarms the other day. I thought they all must know about the importance of having smoke alarms in the house and the lives they save each year, but I wondered if they were aware of the various special smoke that are available. There are many alarms made specifically for people with hearing issues. There are ones that give out an extremely high warning pitch and others that target those who can only hear low pitched sounds. There are some that are connected to a light so when the smoke alarm goes off, a blue strobe light flashes to warn you. This type of alarm can be wired so that a number of strobe lights scattered throughout the house flash should an emergency happen. Another variety is placed under your pillow so if the alarm goes off while you

are sleeping, the pillow vibrates like mad, and you wake up.

You can get more information about these wonderful specialised alarms from five organisations in New Zealand. The Ministry of Health is a good place to start, because not only are they about to give great information, but they can also arrange for you to have an assessment to see if you fit the criteria for free specialised alarms. Deaf Aotearoa New Zealand, Life Unlimited, the Blind Foundation and Housing New Zealand all offer information on the various alarms. If you are a Community Services cardholder, you may be entitled to a free fire safety check. Phone 0800 NZ Fire (0800 693 473) and they will advise if you qualify for a fire safety check.

If you are deaf or hearing impaired, and have issues trying to use a telephone, you may qualify to register with the Police regarding an emergency texting service. If you do qualify, you are able to text the Police and they will get hold of whatever service you require (Fire, Ambulance or Police).

The bottom line is that there are plenty of agencies out there that may be able to help with information and possible finance to purchase such products. If you think you may qualify give them a call and get the ball rolling.

A few of our brigade members visited ex Chief Fire Officer David "Rang" Fleming in hospital on Sunday 3rd.

Our current CFO Rodney Woods presented Rang with a certificate to commemorate 40 years of service in Fire and Emergency New Zealand (New Zealand Fire Service). Congratulations Rang on this wonderful milestone and a heartfelt thanks for the time, effort and dedication that you put into our brigade and community. We are all thinking of you and we wish you well. *Secretary Beau*



Taranaki artist's latest work

One of two paintings by Coastal Taranaki artist Graham Kirk going into the Women's Refuge auction at the Len Lye Centre in late October is "Catwoman With Blue Bag" (near Okato).

hear like a young pup again



CALL US NOW

FREEPHONE 0800 751 000

www.centralaudiology.co.nz

Clinics at:
New Plymouth
Stratford
Hawera

100%
Taranaki owned
and operated
since 1998

 **Central Audiology**
TARANAKI

TARANAKI'S 4WD CENTRE - QUALITY AND SERVICE



FROM \$15,990

08-15 HI-ACE VANS
4WD & 2WD models
Choice of 3



\$59,990

14 AUDI A6 ALLROAD 3.0 TDI
Full spec, Adjustable susp,
Bi - Turbo, 43kms, White



\$15,990

07 MITSU DELICA D5 4WD
Coach, 2.4, Versatile for family
8 Seater



\$29,990

11 MITSU PAJERO SWB
3.2, T/DSL, Auto, P/S,
68kms, Superb in silver



**LOOK!
\$13,990**

08 MERCEDES R 350
White S/W, 7 Seater



\$69,990

16 VW TOUAREG R-Line,
3.0 T/DSL, Every extra in
black, 11kms. As new.

H) Hareb Deken Motors
TARANAKI'S 4WD CENTRE - VISIT WWW.HAREBDEKENMOTORS.CO.NZ

331 St Aubyn St • New Plymouth Ph (06) 759 9943
FREEPHONE 0800 289 493
A/H Mike Hareb (06) 752 7697 Ton Deken (06) 752 7405
RMVT

Towards a predator-free Taranaki

National's Taranaki MPs Jonathan Young, Barbara Kuriger and Harete Hipango welcome last week's announcement that Taranaki aims to be the first predator-free region in the country.



**JONATHAN YOUNG MP
FOR NEW PLYMOUTH**

Predator-Free 2050 was launched by National in 2016 and has the ambitious goal of protecting New Zealand's unique plants and animals by eradicating rats, stoats, and possums from New Zealand by 2050. Predator-Free Taranaki is the first large-

scale project.

"Since National launched Predator-Free NZ in

2016 there has been huge enthusiasm from communities up and down the country," Jonathan Young says.

"Introduced pests threaten our bird species, our economy and our primary sector, with their total economic cost estimated at around \$3.3 billion a year. That's why we all need to work together to rid New Zealand of rats, stoats and possums," Barbara Kuriger says.

"I'm delighted that Taranaki is first. Our region has a compact geography,

strong local expertise in pest control and a groundswell of community and local support for the project. All this means is we are well placed to see success".

"The local Taranaki iwi and hapu with the local Taranaki communities undoubtedly embrace this opportunity to enhance the welfare of their natural environs protecting and caring in a kaitiakitanga relationship," Harete Hipango says.

Predator-Free Taranaki will

cost \$47 million in the first five years with the ultimate aim of removing stoats, rats, and possums from all land types across the region – farmland, urban land, public parks, reserves and Mt Taranaki. It is the first time this has been attempted in New Zealand, and the latest technology and trapping techniques will be used.

"Predator Free 2050 is our very best opportunity to protect our unique birds and animals for future generations. Predator-Free

Taranaki will help ensure that we can make great progress towards a Predator Free New Zealand by 2050," the MPs concluded.

*Jonathan Young
MP for New Plymouth*

*Barbara Kuriger
MP for Taranaki-King
Country*

*Harete Hipango
MP for Whanganui*

Community Leadership Fund Hapori Whakatipu is now open

Minister for the Community and Voluntary Sector, Peeni Henare, has announced that funding of \$500,000 is now available for the Community Leadership Fund – Hāpori Whakatipu, a fund established to grow community capability.

This fund provides government grants to not-

for-profit organisations with a national focus, whose main role is to provide leadership and build capability across the community and social enterprise sectors.

"This funding will support organisations to strengthen New Zealand communities through guidance and leadership to the sector. I

encourage nationally focused organisations who are providing leadership and capability building to apply," Peeni Henare said.

Last year the fund supported the Volunteer Army Foundation to work with 623 primary schools and their students to engage in volunteer projects including

visiting local rest homes and organising local park and beach clean-ups.

Another recipient, Te Whare Hukahuka, is using its grant to bring together a number of sectors to enable Māori social enterprises to succeed including iwi, research institutes, government agencies, philanthropic

funders, mentors, investors, and rangatahi.

The priorities of the fund are to build capability with regard to:

- Collaboration and connection across the sector;
- Social enterprise;
- Volunteering; and
- Community led-

development.

Applications close on 11 July 2018. You can find more information on how to apply at <https://www.community-matters.govt.nz/community-leadership-fund/>.

Contact: Patisepa Helu 021 821 562

Ending exploration a lose lose for environment and economy

The Government's own experts have confirmed that ending offshore oil and gas exploration will be a lose-lose for the economy and environment, say the Petroleum Exploration and Production Association of New Zealand (PEPANZ).

They say it is time for a re-think and they want to work with the Government on a better way of achieving their goals.

"The decision is already

costing jobs in Taranaki and will have a major impact on the economy," says PEPANZ CEO Cameron Madgwick.

"MBIE warns that gas prices to consumers will increase with any tightness in future supply, and at the same time it is unlikely to lower our emissions. In fact, it's likely to mean higher global emissions as we turn to coal and more expensive imported fuel instead.

"The advice particularly

highlights the impact if our biggest industrial users of natural gas were to reduce production here in New Zealand. Production would most likely shift to China with coal as the fuel source instead, resulting in three or four times the emissions.

"Around 400,000 homes and businesses rely on natural gas, but the future outlook for this important energy source is now very uncertain.

"As an industry we share

the Government's goals of lowering our emissions and sustainably growing the economy, but it's becoming evident a ban on exploration is not the right tool to achieve this.

"We want to help and be a part of the solution. We support the ETS, offsetting through afforestation, and carbon capture and storage technology as just some of the much better tools available to help reduce net emissions."

SEND US YOUR SPORTS STORIES AND PHOTOS!



OPUNAKE & COASTAL NEWS

Promote your business or event in our area, call us on:

Ph/Fax: 06 761 7016 - 23 Napier Street, Opunake
or e-mail us: ads@opunakecoastalnews.co.nz

JONATHAN YOUNG
MP FOR NEW PLYMOUTH

P 06 759 1363
E newplymouthmp@parliament.govt.nz
W www.jonathan.young.co.nz
f @MPjonathanyoung

Authorised by Jonathan Young MP • Corner of Gill & Lizardet Street • NP

A BLOCKED DRAIN!!?

"Septic Tank emptying South Taranaki wide"

TARANAKI DRAINCLEANING LTD
Sid Wilson Owner/Operator
Novafloer/Culvert/Shed to Pond/Domestic
P.O. Box 149, Hawera 4610
027 7411792

Automotive Automatics

Taranaki's No1 Automatic Transmission and Power Steering Specialist Approved Repairer for all Major Mechanical Warranties

- * Free Road Test & Consultation
- * Cars & Commercial
- * Engine Servicing
- * All Underbody Repairs

33 Years Reputable Service in Taranaki

473 Devon Street East
Strandon, New Plymouth
PHONE (06) 758 7618

EFTPOS Available. Major Credit Cards Accepted

Opunake Friendship club treated to an enjoyable concert

On Monday May 28 the members of the Opunake Friendship Club and others were entertained by students from Opunake's St Joseph's School at the Opunake Town Hall. The students have been tutored by teacher Stephanie Van Vuuren and well-known musician Mike Gordon of New Plymouth. Rev Geoff Williams introduced the young musicians. Geoff also mentioned a special moment - a ninety-year-old George Govan from the Opunake Cottage Rest home was celebrating his birthday so 'Happy Birthday' became the very first song, with everyone joining in.

In the concert not only was melodic singing on offer, but also the skilful playing of guitars and ukuleles, as well as Mike Gordon on keyboard. The first item was the singing



From left Ella Griggs (12), Kayleigh Fleming (11), Alika Hunn (11) with Mike Gordon on Keyboard. Obscured (sorry) is Stephanie Van Vuuren.

of the National Anthem in Children Come' and 'This Is Made'.
Maori, followed by 'Let the the Day That the Lord Has Many other songs and

instrumental items followed, with variety the keynote and there was something to suit all tastes with country music not forgotten with numbers such as 'Country Roads'. One of the early items was 'West Virginia; featuring two guitarists and three singers combining in harmony.

One of the outstanding items was a ukulele instrumental 'Bare Necessities' featuring two girls Grace Clough and Sophie Gatenby who played their instruments with finesse.

The much loved 'Hallelujah' was performed, with Joshua Ramos providing the music and the singers were Daniel and Amiel Ramos. From the musical 'The Sound of

Music' we enjoyed 'These Are A Few Of My Favourite Things'. Both items were much appreciated.

These was an unexpected musical bonus at the end when Mike Gordon treated the audience to two vocal numbers 'Moon River' made famous by Andy Williams and 'That Boy of Mine' with his soulful, melodic voice, while accompanying himself on the keyboard.

Everyone went home pleased they had attended. Well done to St Joseph's School and musical tutors Mike Gordon and Stephanie Van Vuuren.

GIBSON PLUMBERS LIMITED



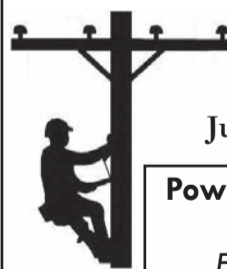
Suppliers and installers of gas heating ie: underfloor, heaters and water, solid fuel fires, radiators etc, all your roofing requirements plus all your plumbing and drainage needs.

IHAIA ROAD, OPUNAKE
Ph: 06 761 8757 Office: 06 761 8159 Mobile: 027 457 164
email: gibson.plumbing@xtra.co.nz

POWERLINE FAULTS AND SERVICING

From a fuse or broken insulator replaced to a complete powerline rebuild
Call: **TOP OF THE LINE**

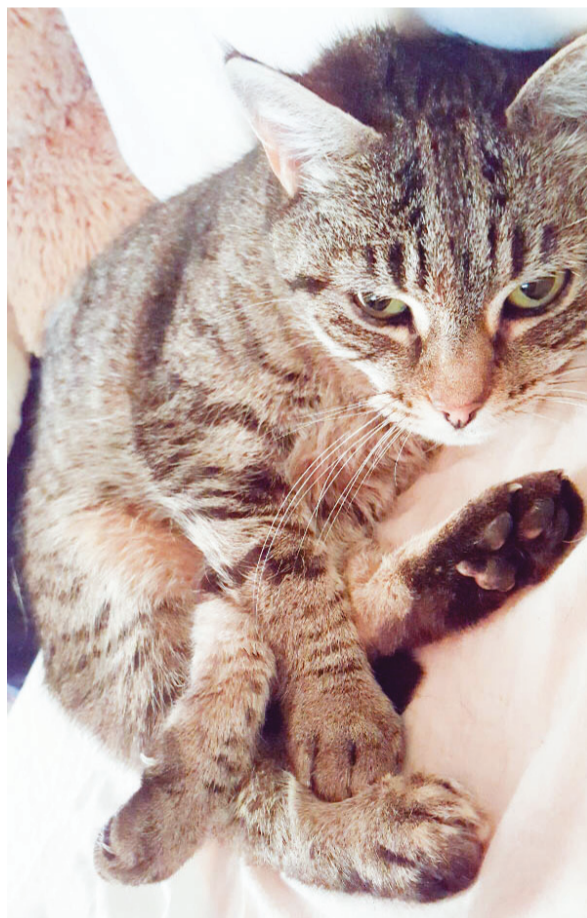
ELECTRICITY SERVICES
Greg Lewis: 027 453 0326
Justin Robinson: 027 445 9162
Powerline Servicing Specialists
Free line inspections
Free advice | Free quotes



Where are you Boody?

Boody is a much loved female tabby (striped) cat, who has been missing since January. Her owner Damelza Burnand said, "I'd go to the ends of the earth to find her." Boody disappeared in the Puniho Road area (not too far from Okato) at a time when Damelza was in the process of shifting house. Currently, Damelza lives in Hawera. The cat is micro-chipped so hopefully this may help. Any vet clinic can read the micro-chip.

Boody is eight years old, has green eyes and, apart from being a tabby has one tortoiseshell paw. She has quite a dainty build and is timid around other cats and also dogs. "I hand-reared Boody from when she was a kitten - she is so special,"



LEFT: Boody (pictured) needs to come home after almost six months away. If you have seen a cat similar to Boody please phone her grieving owner Damelza.

On this month in history Beatlemania hits NZ

On June 21, 1964 the Beatles arrived in Wellington for their only New Zealand tour. Chaotic scenes were witnessed everywhere they went. The group performed in Wellington, Auckland, Christchurch and Dunedin. Teenagers were obliged to be able to name all four members of the Beatles - Paul McCartney, John Lennon, George Harrison and Ringo Starr (Richard Starkey).

In Dunedin crowds totally blocked the main street (George Street) outside the hotel they stayed in, with people hoping to catch a glimpse of the group.



Boody's distinctive tortoiseshell paw.

says Damelza. If you have spotted a cat of this description - especially with the unusual tortoiseshell paw - please give Damelza a call at 027 860 4811.

NEWTON GORDGE JOINERY 2016 LTD

ALL DOMESTIC & COMMERCIAL JOINERY

• Kitchens • Stairways • Vanities • Lounge Units • Bench Tops • And More

67 Breakwater Rd (up Norma's Way) • NEW PLYMOUTH • PHONE (06) 751 5065 • FAX (06) 751 5085 • WWW.NEWTONGORDGE.CO.NZ

First church of the Waimate Plains up for sale

The first church on the Waimate Plains has been placed on the market. Tenders for the sale of the Church of St John the Divine in Otakeho were due to close last Thursday and it is understood there has been a lot of interest.

As noted in the Opunake and Coastal News (December 8, 2017) a service to deconsecrate the church led by the Rt.Rev Philip Richardson, Anglican Bishop of New Taranaki and Archbishop of New Zealand was held on November 26 last year. The church had been consecrated 123 years earlier by one of Archbishop Richardson's predecessors as head of the Anglican Church in New Zealand, the Rt

.Rev.W.G.Cowie who was also Bishop of Auckland.

"One of my predecessors in a time of celebration established this place for worship," Bishop Richardson said at the deconsecration service. "We have gone kind of full circle, as now, not only as Bishop of Taranaki, but as Archbishop of New Zealand, I am saying the words of deconsecration."

Although St John's wasn't consecrated until March 14, 1894, the church had been opened at Easter the previous year. By the time Bishop Cowie arrived to consecrate the church, the first baptism had been held in July 1893, and the first wedding in January 1894.



St John's Otakeho inspired a poem by Sam Hunt.

In September 1892 St John's was designed by Thomas Fitton won the contract to build the church with a bid of 500 pounds. Frederick de Jersey Clere (1856-1952) who from 1883 designed over 100 churches

many still in use around the lower North Island, as well as a number of large country houses and commercial buildings like the AMP building in Wellington. Most of his churches were built in the contemporary gothic revival style with pointed arch and a variety of roof-truss constructions and forms of tower or belfry.

An early list of church members showed 80

families, and the number of people being confirmed in the church right through to 1910 were greater than those at Manaia and at Okaiawa.

Poet Sam Hunt even wrote a poem about the church. He had been staying at Kaupokonui while on a visit to Manaia. Seeing two horses in a paddock next to the church he felt led to put pen to paper.



The Church of St John the Divine.

Garage Doors Specialists



WINDOWS • DOORS • CONSERVATORIES

- Sectional, Roller, Tilt.
- Automatic Openers
- Repairs & Maintenance

Call for a Free Measure & Quote

Ph 06 7588073



Something NEW for Manaia!!

We are pleased to announce the opening of Serendipity Crafts & Gifts located at 46A South Rd, Manaia. This shop is predominantly an outlet for the gorgeous crafts and handiwork made by local residents. The shop has been opened as a Co-Op, which means there are several ways YOU may wish to become involved.

Find us on Facebook

Shop Hours

Wed - Fri 10am - 5pm

Sat - Sun 10am - 2pm

Contact Bridgette on 021 084 33438 for more info.

Shakespeare Spins

A number of Taranaki students took part in this year's 27th University of Otago Sheilah Winn Shakespeare Festival (UOSWSF). These included Nicole Jeanson from Stratford High School, who has been selected at the Taranaki Regional UOSWSF for SGCNZ's week-long intensive programme, the National Secondary Schools Production (NSSP), which takes place in Dunedin in October. Also taking part was Sasha Finer from Hawera High School

(finalist in SGCNZ's annual Static Image competition), while New Plymouth Girls' High School's five minute scene from Richard III, directed by Tessa Keenan was performed, as was Sacred Heart Girls' College New Plymouth's 15 minute scene from Macbeth.

Forty-nine groups selected from SGCNZ's 24 Regional University of Otago Sheilah Winn Shakespeare Festivals nationwide shared their highly imaginative and

innovative interpretations of the Bard's works in 5 and 15 minute accessible bites from 23 of Shakespeare's plays on June 2-3 in public performances at the Michael Fowler Centre, concluding with short talks by inspiring SGCNZ alumni, including leading mocap specialist, Allan Henry, and a performance by Donald Trump international impersonator finalist, Alexander Sparrow.

On Sunday evening, members of SGCNZ Young Shakespeare Company 2018, selected from last year's Regional and National Festivals and SGCNZ National Shakespeare Schools Production (NSSP), performed items, followed by modelling of the constructed garments, designed by the finalists of SGCNZ Costume

Competition.

Of special note, amidst the many SGCNZ alumni who returned to be involved one way or another was Estelle Peacock. One of the two costumiers constructing the four winning designs, Estelle was herself a supreme winner of that competition in 2007 and has gone on to have a successful career in the industry.

"It is exciting to see evidence in a wide spectrum of careers of the benefits of SGCNZ's provision of stimulating opportunities for young people to think laterally, delve into the Bard's words and deliver them in various guises in ways which resonate today and give the students skills for their futures," said SGCNZ CEO, Dawn Sanders.

2.95% Finance



D-MAX 125



125HP Tier 3 Engine 36x12 40kph 3 stage power shift transmission Big Flat Floor Platform 95L Hydraulic Flow 480 65 R24 & 540 65 R38 Wheel Equip Comes with Loader



DT90 MULTIFARM



90HP Great multi-purpose or dry stock tractor Perkins Tier 3, 4 Cylinder Turbo Engine 12x12 Synchro Shuttle 380 R20 & 480 R30 Wheel Equip Comes with Loader

Finance based on 30% deposit 24 months GST back in month 3. Normal lending criteria applies

AGTraction 643 Devon Road, Waiwakaiho, 06 759 8432

Paul Stanton 0274403074 | Tony Coombes 0272437910



www.agtraction.co.nz

BURGLARIES!!!

Don't become a victim!

Business, Rural or Residential Security Systems

Driveway/Tanker Track alarms

High Quality Digital Camera Systems

Notifications, photos, direct to your cellphone



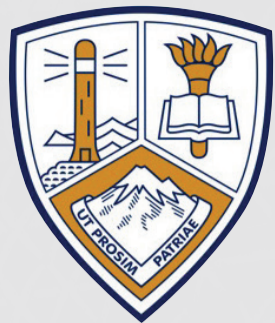
GRAHAM LYNCH SECURITY

CALL ME TODAY

Phone 06 2788749, Mobile 021 759624

www.lynchsecurity.co.nz

FREE NO OBLIGATION QUOTES



OPUNAKE HIGH SCHOOL

Te Kura Tuarua o Opunake

P: 06 761 8723
Attendance: 0800 288 363

PO Box 4, Opunake 4645
Tasman St, Opunake 4616

www.opunake.school.nz
admin@opunake.school.nz



MANAWATU SPORTS EXCHANGE 2018

Once again, our good friends from Manawatu College journeyed up SH3 to be greeted by a snow-capped maunga and some outstanding Taranaki weather to take us on in our annual sporting and cultural exchange and unlike our dominance of the 2017 exchange, this years competition got off to a really contested start.

The first day of competition featured the glamour First XV match where Manawatu showed they meant business by rolling our lads 32-17. The side from Foxton were on a roll also taking the girls netball 29-27 in a tight encounter where our girls could never quite catch-up.

Following hot on the heels of the netball, our champion Basketball Girls showed their class right from the get go, with the team playing great defence and running through their plays to win 86-23. While this was all happening, the hockey side were in Stratford winning 4-0. It was left to debating to break the deadlock with a win to OHS.

To change things up for this year, students socialised at a quiz night run by Mr Cook and Mr Bedford, students formed mixed teams as a way of getting to know one another better.

Day Two saw our Boys Basketball roar to a massive 102-20 win, OHS Boys Soccer dominated to win 7-0, while Manawatu took early control in the rugby and didn't let up to win 29-12. The last, and possibly best event was the Girls Volleyball, where our girls came back from two sets down, to tie it all up at 14-14 all in the fifth set to eventually win 3-2. Opunake taking the overall win 6-3.

A huge amount of thanks and recognition go to Mrs Quinnell for her efforts organising an outstanding exchange, she even got the weather gods to bless us with sunshine for the duration of the event.

After a rousing farewell haka and first-class lunch, Manawatu were back on their bus, headed home, waiting to take us on in 2019.



Opunake High School

Te Kura Tuarua o Opunake

Growing good people for a rapidly changing world
He waihangatanga o te tangata pai i roto i tenei ao hurihuri

2019 Enrolments

OPEN DAYS

Thursday 28 June

& Friday 29 June

10am in the school hall

ALL WELCOME TO ATTEND

PO Box 4, Opunake, 4645 P: 06 7618723 Attendance 0800 288 363
E: admin@opunake.school.nz W: www.opunake.school.nz

PRINCIPAL - Peter O'Leary M.Ed B.Sc Dip Tchg
Visit us at www.opunake.school.nz or like us on Facebook

53 YEARS UNBEATEN

When you think of unbeaten sporting streaks, the All Blacks or Harlem Globetrotters are among the first names that spring to mind - you wouldn't expect Opunake High School to have a team in a similar conversation - until you discover the Hockey team has gone unbeaten versus Manawatu College for 53 years.

Captain for this years exchange, Year 12 student Michael McCarty admitted to nerves pre-game. When reminded of the pressure to not lose his comments were - "I am scared to eat in case I throw-up". Luckily for McCarty it wasn't an issue as an Opunake goal in the first two minutes calmed the nerves, and eventually Opunake ran out as 4-0 winners, keeping the record intact for at least one more year.



Manawatu attempt to defend a penalty corner

GROWING GOOD PEOPLE FOR A RAPIDLY CHANGING WORLD

He waihangatanga o te tangata pai i roto i tenei ao hurihuri



Proudly supporting the Opunake community for more than 30 years.

www.stos.co.nz



Shell Taranaki Ltd

Reb Fountain celebrates a double win at New Zealand Country Music Awards

The New Zealand Country Music Awards were held recently in Gore, with the extremely talented Reb Fountain winning the 2018 Recorded Music NZ Best Country Music Artist and APRA Best Country Music Song.

Reb first began constructing her Hopeful and Hopeless EP in 2014 when it was recorded live at The Wine Cellar while she toured with The Eastern. It would be the last time she would share the stage with the late Sam Prebble (Bond St Bridge, Mermaid & Mariner, The Broken Heartbreakers).

To help herself move on, she completed the unfinished projects she began with Sam – including Hopeful and Hopeless and an album called Little Arrows, the latter of which saw her nominated for Best Folk Artist in 2018.

The raw intensity of Hopeful and Hopeless has been recognised with the 2018 Recorded Music NZ Best Country Music Artist Tui, a testament to her decision to finish and release the EP after three

years.

Reb also won the APRA Best Country Music Song for her title track of the same name.

“Hopeful and Hopeless is a song about people like us, or people less fortunate than us just doing the best they can, trying to get by” explains Reb.

“But it’s also a song that helped me find my sense of strength and hope and community when I thought that everything was lost. Of all of the songs I’ve written, this song reminds me most of the mighty mariner Sam Prebble, and even though he has passed, he is very present with me every time I play it, so to win best APRA Country Music Song for this means the world to me.”

Recorded Music NZ CEO Damian Vaughan says New Zealand’s country scene is moving from strength to strength each year.

“Country music is a genre built on foundations of emotion, something that Reb captures with not only this amazing EP but her overall music style.

“There’s a strong connection to Americana

roots blended with a distinct New Zealand flair that makes her music complex and compelling.”

APRA AMCOS Head of New Zealand Operations Ant Healey says: “It’s wonderful to see Reb Fountain recognised for her exceptional song writing talents. Her striking turn of phrase and distinctive point of view make Hopeful and Hopeless feel like a classic song that we’ll be hearing for years to come.”

Other finalists for the Recorded Music NZ Best Country Artist were Lana Doublet for Beautiful Hands and Phil Doublet for Strength, Love, Music & Light.

Jenny Mitchell’s ‘Let Me Be’ and Kaylee Bell & Brooke McClymont’s ‘Next Somebody’ were the other finalists for the APRA Best Country Music Song.

The New Zealand Country Music Awards are hosted by the New Zealand Songwriters Trust and the festival attracts more than 5,000 fans annually and is in its 44th year.

Finalists for Recorded Music NZ Best Country



Reb Fountain. Music Album. Winner: Reb Fountain – Hopeful and Hopeless(winner), Lana Doublet – Beautiful Human, Phil Doublet – Strength, Love, Music & Light. Finalists for APRA Best Country Music Song. Winner: Reb Fountain – ‘Hopeful and Hopeless’(winner), Jenny Mitchell – ‘Let Me Be,’Kaylee Bell and Brooke McClymont – ‘Next Somebody.’



QUALITY HAND HARVESTED CELTIC SEA SALT

From the coastline of France

The product of an ancient time-honoured method of harvesting.

In the process ocean water is channelled daily into shallow clay ponds. The wind and sun evaporate the water leaving behind a rich brine. The mixture is then briskly stimulated by local salt farmers to form sparkling crystals. These are delicately gathered with long wooden tools. This time- honoured method produces pure, unrefined, fully mineralised , well balanced, highly potent Sea Salt. Our Celtic Seal Salt remains unwashed - 100% natural .

What is the difference between Refined Salt & Salt of the Earth’s Celtic Sea Salt?

Medical research which has shown that excessive amounts of Sodium Chloride can clog the arteries, raise blood pressure and build fluid has been based off refined table salt. The refining process extracts 82 of the 84 mineral elements. Chemical elements such as aluminuim hydroxide and aluminuim silicate are then added to bleach the salt and prevent water absorption. The process used by Salt of the Earth removes and adds nothing, and retains the natural mineral content of the ocean.

Try our gourmet salt blends with organic herbs and spices



THE HEALTH SHOP

We keep you healthy™

Centre City Shopping Centre Ph: 06 758 7553

We welcome your contributions
Please send to
editorial@opunakecoastalnews.co.nz
Next Issue due out June 21



• Feed Pads
• Effluent ponds
• Bridges
• Earthworks
Phone Darryl
027 223 6699
Operating out of Norfolk





Opunake
KINDERGARTEN

Find us at 56 Whitcombe Road, Opunake
Session Times - Monday to Friday 9-3pm Ph: 06 761 7440
Email: opunakekindy@xtra.co.nz

Like us on Facebook to find out more and keep up-to-date on our latest news.

Did you know?

Our kindergarten has a specialized area for Under 3's where the tamariki are able to develop their sense of wellbeing and belonging in a calm, nurturing, secure environment with small ratios (1:3). The tamariki transition to the Maunga Room when they are ready (stage of development dependent) 2.5- years of age

Moana Room Philosophy:

Opunake Kindergarten's H.E.A.R.T. philosophy includes our philosophy of respect which we have adapted from the RIE and the Emmi Pikler approach.

Here in the Moana room we base our teaching and learning on a philosophy of **Respect.**

Responsive/ Empowerment/ Space/ Potential /Explore Actively /Competent/ Time

Adopting a primary care-giving and key teacher system we can focus our full attention on the child holistically. We are in tune with the rhythms of our children as we allow time, space, and freedom within a safe and emotional secure environment and where we can listen to our children rather than assume we know best. We have regular events and routines which are adjusted when necessary to accommodate the needs and desires of the children.

Our Kindergarten philosophy is **H.E.A.R.T.** which stands for the values of:

Health, Empathy, Aroha, Resilience, Tikanga

All teaching and learning at our Kindergarten are based on these values.

Opunake Kindergarten is licensed for 65 children from 0 to 6 years of age.

Parents/whānau are eligible for the 20-hour early childhood education Government Subsidy for 3 to 5-year olds.

All our children are assigned a Key Teacher who communicates with parents/whānau regularly and document each child's learning progress.

We have two rooms - Moana Room is the Infant and Toddlers and the Maunga Room is for our young children.

The Kindergarten is open for children from 9:00am-3:00pm from Monday to Friday.

We are a "stand alone" Kindergarten which means we are not a part of the Taranaki Kindergarten Association.

In our recent ERO Review it was reported:

*"The Governance Strategic Plan 2015-2020 provides a clear direction for the centre".
"That children explore well considered range of planned and spontaneous experiences linked to goals responsive to their preferences, interests and needs. Literacy, mathematics, science, Te Āo Māori and creative opportunities progress children's language, knowledge and understanding."*

"Te ao Māori is woven well throughout the programme". - May 2018

We welcome new enrolments, if you want to know more about Kindy, please feel free to either ring (06 761 7440) or call in to have a look around.

Afternoon mat time in the Moana Room



Leonie, Charlie 2 years 2 months, LeeAnn, Kiera 2 years 8 months, Archie 2 years 7 months, are learning about the respect stone.

Police Dogs and Officers come to Kindy



Last term the tamariki met police dogs Icon and Olric and Police Officers Cam and Max.

WATER FOCUS

Our Enviroschool focus for the year is Water.



Shylah Graham 4, Celeste Langton 4, and Bella Harrison 4 collect the rainwater from the down pipe so they can measure it in the big clear jug.

At Kindy we are engaging in conversations with our tamariki to see what they know about water and have had some interesting feedback.

- Water comes from the mountains and the sky.
- Ranginui cries to make rain.
- Water comes from the clouds and brings it down to make rain.
- Water is good for our tummies.
- Cows drink it and fish live in water.
- We water our gardens.
- We need water to grow our sunflowers, cucumbers, tomatoes and bananas.
- Water is healthy for our bones.
- To clean my teeth and wash our clothes.

Our water focus has given the tamariki other ideas to learn more about water.

Our rainfall has provided many learning opportunities for our tamariki especially supporting our measuring focus.

Back to their roots for new Four Square owners

For Ben and Molly Steiner taking over the Kaponga 4 Square will be something of a homecoming.

Molly can trace her family connections to Kaponga back to her great grandfather on her mother's side, Wellington Carrington who ran a barber shop in the town.

"My granddad always used to talk about Kaponga and how he grew up here," she says. "Granddad always backed us in what we wanted to do."

Her father's side of the family hail from nearby Matapu.

Ben grew up on a dairy farm in Kapuni and has memories of going along with his



Ben and Molly Steiner.

family to the Taranaki Swiss Club in Kaponga. Ben, who is a builder by trade did his High School years at New Plymouth Boys High School and stayed on in New Plymouth where he met Molly.

Seven years ago with family support they took over a Pita Pit store in New Plymouth and three years later shifted up to the Waikato to take over another store in Te Awamutu.

Four years on they are back in Taranaki again with help and support from family, this time running their first supermarket.

"It's been really great because both our families are here in Taranaki," says

Molly "It's cool to be home and going down this journey of owning our own supermarket which is very exciting. It's always been a dream of ours and the community has been very helpful and very welcoming."

"Everyone has been real friendly and easy to get along with," agrees Ben.

"It's been pretty fun working together, and we want to be involved in everything we can," says Molly.

"We want to get settled, learn the basics, focus on customer service and getting to know our customers and the community."

TSB Community Trust celebrate 30 years of giving and growth

In May the TSB Community Trust turned 30. The Trust was established in 1988 as the sole shareholder of TSB Bank Ltd, following a landmark decision by the then Taranaki Savings Bank Board to remain independent.

It has since grown to become one of New Zealand's leading philanthropic community trusts.

Over the past 30 years the Trust has been governed by more than 50 Trustees - each has in their own way had an impact on the success of the Trust and the community.

In 1990, the Trust's first year of grant making, \$161,000 was granted. Over the years since then and due to the strength of the Bank, the Trust's contributions

have grown. Today the Trust has an annual distribution of over \$10 million dollars and has contributed over \$127 million to Taranaki not for profit groups and individuals.

It has significant assets and is looking to grow these for the benefit of the region. These include TSB Bank Ltd and a controlling interest in

Fisher Funds Management Ltd. The investment in Fisher Funds will result in greater returns to the region in the future.

The Trust has gone from strength to strength over the past 30 years. In the early days it was a simple grant maker. It has matured to become a more strategic funder.

Today it not only supports

the many small organisations that make up the fabric of the Taranaki community, it is also looking to address significant community needs.

The Trust's strategic work takes many forms including partnerships, training opportunities and walking alongside community groups to help them achieve their goals.

Based on research, in 2016 the Trust prioritised child and youth wellbeing, focusing on the early years, in response to evidence that making a difference earlier has the greatest impact.

Another result of the research was greater understanding and recognition by the Trust of

continued on page 15.



ENROL NOW FOR OUR FREE TASTER DAY @ TARATAHI CAMPUS, 13 JULY 2018!

Be the future of AGRICULTURE

Taratahi is New Zealand's largest nationwide provider of farming vocational education. Our Taranaki campus is now looking for students who are ready to discover the outdoors and start their future in agriculture.

- Whether it's Farming Systems, Vehicles, Machinery and Infrastructure, or Apiculture (bees), Taratahi can give you the knowledge and skills you need to be successful on or off the farm.
- Gain an NZQA-approved qualification, plus on-farm practical learning.

ENQUIRE NOW!
0800 TARATAHI
www.taratahi.ac.nz
info@taratahi.ac.nz





Do you like honey?

Due to continuing growth we are looking for new hive sites in the Taranaki region for the upcoming season starting in September 2018.

Do you?:

- Have a brushy corner, old creek bed, quarry, runoff, forestry block or cut over area that could possibly be suitable for hives?
- want a supply of local honey in your cupboard?
- like to see honey bees pollinating your pastoral flowers/riparian/orchard or bush?
- want to support honest, local beekeepers that currently have hives on more than 20 farms in the district, some for more than 5 years?

If so, contact us at Taranaki Bees.

We can tidy up access and fencing if required. We have full-seasonal sites, which means you get pollination year-round, as opposed to manuka hives which get removed from your property just when you want the clover pollination benefits. Get in touch for a no obligation on-site assessment and a free pot of local honey for your time. References available.

Respectively utilizing your land resource, with no impact to you and benefits for all



'Honey is the only food that includes all the substances necessary to sustain life, including enzymes, vitamins, minerals, and water; and it's the only food that contains "pinocembrin", an antioxidant associated with improved brain functioning'

TARANAKI BEES LTD



Trish 021 132 1220
 Lyall 021 151 6874
taranakibeeg@gmail.com



Me Myself I by Jaunte Churchill

Konnichina! Anneyong! My name is Jaunte Monique Churchill and I am a thirteen year old. I'm inquisitive, happy and unique. I've been told that I am quite peculiar, but that's what makes me me. I am super hyped to tell you about me, so let's get to it.

I have a family bigger than most. My family consists of seven people; two adults and five kids. I have two older brothers, one younger brother and one younger sister. And you know where that puts me? Smack bang in the middle. I don't mind



Jaunte

though, I'm the only one that doesn't have to share a room. (smug face).

Since I have my own room I have a lot of time for myself. This ends up giving me time

to find new hobbies. But my main interest is art. Art to me can include anything like the art of speech. The art of speech is learning different languages. It is so much fun and it puts a little bit of challenging things into my hobbies. Right now I am learning Korean. I got really interested in this form of arts about one year ago. But I only began pursuing this hobby about a month ago. I am also very interested in the traditional art like drawing, painting, music and more.

I'm also interested in the art of dance, but not as art,

but as a sport. Gymnastics, in particular. This art/sport is very good to have if you like to be flexible. It improves agility and is so much fun to mix into dances. Although dance is my favourite sport, soccer comes in close behind. Soccer is so fun to play and I love booting the ball across the field.

Although a lot of people have role models that play their favourite sport or do art, I'm a little different. I love my role models so much and I have had the privilege of knowing them my whole life. So, thank you

Mum and Dad. You have stuck by me for as long as I can remember. You make me want to be a better person and I will always look up to you.

My parents have always encouraged me to do my best at home and it's just the same for school. My favourite subject in school is writing. Writing is yet another form of art that I love. It is a subject that I strive at and can get motivated fairly easily to write.

When I leave my schooling days behind me I plan to become a paediatrician. I just

love the feeling of being able to help people and I want to be able to help people and I want to be able to feel that every day. I decided this when I was three years old and I have stuck with that dream ever since.

I have nothing left to say about me except I have been striving and reaching for my dreams and I will continue to do so. I hope you liked hearing about me. Bye.

Jaunte is a Year 8 student at Opunake Primary School. She is in Room 1.

TSB Community Trust celebrate 30 years of giving and growth

continued from previous page.

the importance of working with Māori to support improved outcomes for whānau.

In 2017, the Trust adopted a new community investment and funding framework

and a strategy to increase partnerships with Iwi.

It formed its first formal iwi partnership, signing a relationship agreement with Te Atiawa.

It also decided to invest in the work of Te Pou Tiringa, a local organisation

working closely with Otago University to research what works for tamariki and whānau in Taranaki.

Hayden Wano, Chair of TSB Community Trust says "Over the past five years the Trust has undergone much strategic and operational

change. We've grown our asset base and introduced strategies that have the potential to make a real difference in this region".

With two major assets with a combined fair value of over \$1.3 billion the Trust's potential capacity to

contribute to Taranaki in the future is significant.

By 2007 the Trust had granted its first grant of over one million dollars - \$1.25m to the Rotokare Scenic Reserve Trust for its predator proof fence and \$2m to the Taranaki Rescue

Helicopter Trust towards a new rescue helicopter

In 2013 the Trust approved its largest single grant to date - \$4.5m to the Taranaki District Health Board for the development of the children's wing at Taranaki Base hospital

On this month in history the Rose-Noelle capsizes

On June 4, 1989 the trimaran Rose-Noelle overturned in heavy seas just out of Picton on a proposed trip to Tonga. The four occupants had to

spend the next 119 days making do in the upturned yellow boat. Eventually the boat drifted back to land, and was cast onto a reef on Great

Barrier Island where it was smashed to pieces.

Ironically, when they made it back to safety they faced some scepticism that their

ordeal had occurred at all. It was even suggested drugs were involved. The skipper John Glennie and American Jim Nalepka both

wrote books about their experience.

Sadly, another survivor Rick Hellreigel, who was a former policeman, died of

a brain tumour just months after surviving his 119 day ordeal at sea in an upturned boat.

**ON TIME.
ON BUDGET.
YOU'LL DIG WHAT
WE DELIVER!**

EXCAVAT

**021 195 4204
joel@excavat.co.nz**

CALL US TODAY.

FOUNDATION WORK | CALF SHED UPGRADES & CLEANOUTS | LANDSCAPING

HEATING FEATURE

Seasonal produce provides affordable winter wellness

You can rely on us for your energy needs



Transform your home - all your hot water, space heating and cooking needs from your trusted local Rockgas supplier.

Count on us - reliable delivery of 45kg LPG cylinders to your home, business, or farm where ever you live.

Locally operated and proud to be part of your community

contact **your local rockgas supplier**

www.rockgastaranaki.co.nz

Call Rockgas Taranaki
0800 LPG 2 YOU or 06 757 9264

Winter feels like it is well and truly here, and seasonal fruit and vegetables play a vital role in boosting immunity and fighting off unwanted ills and chills.

Niki Bezzant, food and nutrition writer and editor-at-large for Healthy Food Guide, says eating seasonally is not only economical, but ensures we are getting the right vitamins and minerals in our diet.

“Getting lots of fruit and vegetables in winter is especially important to keep up our intake of vitamins and minerals to boost immunity. Fruit and vegetables also contain fibre which is beneficial for gut health, a very important part of our immune system,” she says.

With soup season in full swing, winter produce such as kūmara, carrots, parsnips, broccoli and cauliflower lend themselves perfectly to creating hot, creamy and nutritious soups and are packed with dietary fibre and vitamins. Kūmara and broccoli in particular are bursting with Vitamin C, both containing more than

the recommended daily dose, as well as Vitamins A and B6.

5+ A Day Charitable Trust General Manager Paula Dudley says familiarising yourself with what’s in season is a great way to save money. In-season produce is fresher, better value and more sustainable because it’s locally grown and minimally transported.

“Eating at least five servings a day of fruit and vegetables is great, but eating more and a good variety, is even better,” says Dudley.

Niki Bezzant says another cost-effective idea is batch cooking winter vegetables, it is a simple way to plan meals and a great time saver for our busy lives.

“Roast up a big dish of kūmara, pumpkin, parsnip, potato and carrots at the start of the week and use them in salads for lunches, frittatas for breakfast or casseroles for dinner.

“I also love dark leafy greens like silverbeet, spinach and kale in winter, they add goodness to almost anything, particularly soups

and casseroles. Citrus fruit is abundant now and perfect as a snack or dessert,” says Niki.

Paula Dudley says increasing your intake of fruit and vegetables can make a big difference to the way you feel in just a couple of weeks, helping to lift your psychological wellbeing, lowering stress levels, and boosting vitality and motivation – all of which become even more important during the cold winter months.

“Consuming fruit and vegetables reduces the risk of disease, with recent studies suggesting eating plenty of fresh produce may lead to longer lives.

“Fruit and vegetables contain lots of nutrients and antioxidants, and have been shown to reduce bad cholesterol levels, lower blood pressure, and boost the health of blood vessels and the immune system,” says Dudley.

In season fruit and vegetables are also healthy for the bank balance. Currently, a family of four can buy at least two

days’ worth of their five plus servings of fruit and vegetables for under \$20.

For example, that could include produce such as carrots at \$2.49/kg, which is approximately eight carrots; two kilograms of potatoes for \$5.58 (\$2.79/kg), between 10-12 medium-sized potatoes; one large broccoli head at \$1.79; one kilogram of mandarins at \$3.99/kg, equating to around 10 pieces of fruit; a big bag of fresh spinach at \$3.29; and eight kiwifruit, equivalent to one kilogram, for \$2.29/kg.

That’s a total of \$19.43 to feed four people their five plus servings for at least two days, or \$2.43 per person a day.

“Variety is the spice of life, so be sure to mix up different varieties of the same fresh item, like kiwifruit or kūmara. You might just discover a new family favourite,” says Dudley.

For more information on what’s currently in season, as well as handy storage and handling tips, nutritional information and recipes, visit www.Saday.co.nz.

Steve Gray PLASTERERS



Interior or Exterior Ceilings & Walls

PH/FAX: (06) 272 8445
16 Kate St, NORMANBY

RIGHT: Look at the snow on Mount Taranaki

Yes folks, it’s the end of the long summer. In the aftermath of our hottest summer on record we were still enjoying a balmy May. Several days later we were experiencing our coldest day for the year. Winter has definitely arrived.




Shhhh, they're very quiet

Sinclair Electrical your heat pump specialists. We supply and install Mitsubishi and Panasonic Heat Pumps

Call today for exceptional service and a warmer home this winter!

SINCLAIR ELECTRICAL & REFRIGERATION
31 Tasman Street, Opunake
Phone: 06 761 8084

SINCLAIR Beta ELECTRICAL

Electrolux Panasonic dyson PARMCO Haier MITSUBISHI ELECTRIC Fisher & Paykel BOSCH LG

Winter warmer package deal **metrofires**



PACKAGE INCLUDES

- R1 wood fire
- Standard freestanding flue system
- Pioneer double flue shield

ALL FOR ONLY \$1799

15kW R1 Package Fire + flue & shield

- Clean air approved and built to last with NZ made steel
- Designed to heat open areas up to 150m²
- Naked firebox design providing up to 15kW's of heat output
- 10 year firebox warranty

Please note: The R1 Package does not include the floor protector (hearth) illustrated. The package price is for the listed package contents only. Installation and council consent costs will need to be provided by your local Metro retailer or installer.

We are suppliers and installers of the Metro woodfire range

Houghton's Plumbing, Heating & Gas Ltd
164 PRINCES STREET, HAWERA 06 278 8883 • www.houghtonsplumbing.co.nz

Plumbing Gasfitting Drainlaying Bathrooms Heating Parts & Service

Master Plumbers

HEATING FEATURE

A flash hat



Te Kapua Toby models a hat.

Just the thing on these cold winter nights when you're scrambling around for wood in the dark, a hat with a built in light.

The torch light can be removed for washing and is rechargeable.

The cosy hats in black and grey being modelled by Te

Kapua Toby from Opunake are available at Collins Sports Centre, Tasman Street in Opunake.

Getting gas could be easier than you think

Rockgas Taranaki is your trusted local Contact Rockgas LPG supplier. Our dedicated team aim to provide the best service and reliability to our customers. We offer a range of products and services for your home or business, including 45kg LPG cylinder delivery, 9kg gas bottle fills, forklift and commercial cylinder refills and delivery.

It's so easy with Gas

Perfectly cooked meals, luxurious instant water and a cosy house through winter are just some of the benefits of having gas in your home. And getting gas could be easier than you think, even if there are no pipes in your street.

A Rockgas Taranaki LPG HomePack requires no expensive network connection and could be up and running

in days, not months. As long as you have a place to safely install two gas cylinders, you can enjoy cooking and

heating with gas. If you're building, renovating or just want to find out if gas could be for you, contact the guys at Rockgas Taranaki.

How does it work? What about the pipes?

We deliver two 45kg cylinders filled with LPG to your home, along with a HomePack. The HomePack provides your own personal gas supply and doesn't require connecting to a gas network. A registered gasfitter will then connect your HomePack to your appliances and make sure everything is safe. As soon as one cylinder is empty, your automatic regulator will switch to the second. When this happens, just let us know and we'll replace

the empty cylinder on the next delivery day in your area. That's all there is to it. No interruptions. No fuss.

Gas heaters

Gas heaters provide radiant heat and can be installed with a flue, much like a wood burner. This removes any emissions and prevents the build-up of moisture in your home. Choosing a flued heater is a good idea because gas produces moisture when it burns, which can cause condensation in your home.

For extra efficiency, look for a 'condensing' gas heater. This means the heater extracts a large amount of heat from the exhaust, so less heat gets lost out the flue.

Penniall Jordan

The heat is on!

Servicing Taranaki Since 1973

Don't forget about your Log Fire, see us for Wood Fires, Servicing and Parts!



Penniall Jordan

- PLUMBING • HEATING
- GASFITTING • CENTRAL HEATING
- DRAIN LAYING

191 Broadway
Stratford

Ph 06 765 5336

www.pennialljordan.co.nz

Carpets Wholesale & Retail 2006 Ltd



CARPET AND VINYL SALE NOW ON

~~Normally \$170~~

\$85 a metre

Carpets Wholesale & Retail 2006 Ltd

319 Devon St East, Strandon, NP
Ph: 06 758 9187 Email: cwrltd@xtra.co.nz



**5 GLOVER RD
HAWERA**

Ph: 06 278 7126



Workshop 06 278 1494
Mobile 027 446 2494
24 Scott Street, Hawera

Supply & Installation - Commercial & Residential
Carpet - Vinyl - Cork - Parquet - Hydroproxy &
Safety Floors - Rebuild & Sub-floor preparations
Restretch - repairs - maintenance

MARTIN MUNDY N.Z.N.F.A.
Email: martinmundy@hotmail.com

Style My Space Limited

Showroom at 76 Rata Street, Inglewood | Dorothy Collett: Decorator Consultant

WINTER WARMER PROMOTION

FREE LINING ON CUSTOM MADE DRAPES

• 20% DISCOUNT ON ROLLER BLINDS • 30% DISCOUNT ON VENETIAN BLINDS

PHONE DOT on 0276 303 224

GOLD SPONSORS



Coastal Meat PROCESSORS
www.coastalmeats.co.nz
Phone: 06 752 4280
027 752 4280



COASTAL RUGBY



Proud to sponsor Coastal Rugby
86 Molesworth Street, New Plymouth, Ph 06 769 5371
39 Regent Street, Hawera, Ph 06 278 2010 (0800 3 AUTOCITY)

Peter Moffitt FarmWise®
Ph: 06 751 1265 - Mob: 027 242 1812

0800 100 123
ravensdown
Smarter farming for a better New Zealand

Young & Carrington Lawyers
Proud Sponsors of Coastal Rugby
LAWYERS FOR THE COAST
Thank you for your support

McDonald Everest INSURANCE BROKERS LIMITED
Proud Sponsors of Coastal Rugby
158 Powderham Street, New Plymouth
Ph: 06 758 1199 Fax: 06 758 1188
Members of the Independent Insurance Brokers Assn.

btw company
surveyors . planners . engineers . land & g-i-s services
Proud sponsors of Coastal Rugby
179 Courtney Street, New Plymouth
0800 BTW Survey (0800 289 787)
www.btwcompany.co.nz

HD HAREB DEKEN MOTORS
Proud sponsors of Coastal Rugby
331 St Aubyn St - New Plymouth - Ph 06 759 9957
Freephone: 0800 289 493

Premiers win away and at home



Rick McKenna busts through would be tacklers
It was back on the road on Saturday May 26 for the Farmsource Coastal Premiers. The game was against Clifton and was played at Tikorangi. Things went well in the first half with Coastal dominating possession. A late try to Clifton made the score 19 - 10 at the break. The hosts controlled most of the possession in the second half and the Coastal defence was seriously tested. Clifton ate away at Coastal's lead and with less than 10 minutes remaining were 25 - 19 ahead. With only seconds remaining, Coastal scored again and a pressure conversion by Rick McKenna gave Coastal the win. Try scorers were Tevita Fa'ukafa, Liam Parker and

Jeremy Newell with the remaining 11 points coming from the boot of Rick McKenna. Man of the match was Blake Barrett. A week later and Coastal was at home in Rahotu. The opposition was Stratford/Eltham. A solid first half had the boys up by 29 points to 10 at the break, but the job was only half done. For the first time this year the performance continued into the second half, and the full time score of 56 - 22 was richly deserved. Tries were scored by Liam Parker (2) Brett Goodin. (2) Lisiate Folau, Jeremy Newell and Rick McKenna. Rick also kicked six conversions and three penalties. Man of the match was Brett Goodin.



Proud Sponsors of
- Coastal Division 2 Team
- The Coastal Rugby Club Farm



GoodinAg
SUPPORTING FARMERS
www.goodinag.co.nz | 06 7638765

SANDFORDS RURAL CARRIERS
RURAL CARRIERS
Proud to support Coastal Rugby

ANZCO FOODS
BRUCE THOMPSON
FREEPHONE 0800 654 779
MOBILE 027 4455 285



The GOOD HOME
PUBLIC BAR | 21 ANKI ST
RESTAURANT | IT'S NOT A HOUSE IT'S A HOME
FEEL RIGHT AT HOME THIS WINTER

CAMPBELL CONTRACTING LTD
Rusty: 027 280 0743
Michaela: 027 274 5662

ONE ELECTRICAL TARANAKI
29 Norwich Ave, Spotswood, New Plymouth
Phone: 022 031 5072

COASTAL RUGBY



Proud sponsors of Coastal Rugby

5 Tasman Street Opunake, Taranaki
PHONE 06 761 7531 - 0800 107006

GOLD SPONSORS



Phone: 06-763 8668

WASHER & CO BULLHIRE

PH 06 752 1135 FAX 06 752 1131
EMAIL: BULLSHOP@XTRA.CO.NZ



97 TASMAN ST, OPUNAKE PH 06 761 7079



JOHN BLUNDELL ☎ 027 240 2827



Coastal
Veterinary Services
Ph 06 761 8105



Proud sponsors of Coastal Rugby
CHRIS STANDING - 021 791 246

JFM CONTRACTING Ph: Jared McBride

on 06 752 4558
or 027 4775 701
Go Coastal!

NZ FARMERS LIVESTOCK

For all your Livestock requirements
Contact
Tim Hurley - 027 445 1167
Bryan Goodin - 027 531 8511

Making top four a real possibility



Beauden Fleming controls the ball nicely to score in the corner.

On Saturday May 26 the FBT Coastal Div 1 team got off to a strong start against Clifton at Tikorangi. Coastal dominated the first half hour of the game and scored two good team tries to Danny Warren and Dave White. However Clifton came back strong in the last 10 minutes of the first half and scored to make it 10-7 to Coastal at half-time.

The second half saw Coastal dominate a lot of the play and looked dangerous on a few occasions. Some very good tactical kicking from Jamie Fevre slowly wore Clifton down. This

allowed the forwards to apply pressure and led to tries by Troy Whitehead and Thomas Bell in the last 15 minutes of the match to secure a Coastal win 27-10. The Coastal forwards scrum was the best so far this season against a much bigger Clifton side.

A positional change from halfback to second five for Jarod Davey earned him the player of the day for a strong defensive effort. This was a good team effort and got us off to a very good start for the second round.

On Saturday June 2 at Rahunu we took on

competition leaders Stratford/Eltham. FBT Coastal for the second week in a row again dominated a much bigger team for long periods of this game. While we had a lot of ball we struggled to put phases together. Dropped passes, knock-ons and penalties at ruck time kept the frustration levels high and kept Stratford in the game.

Even with their high error rate Coastal never really looked like losing the match and went on to win 24-9. Two tries to Troy Whitehead and one to man-of-the-match Beauden Fleming along with

a 100 per cent kicking record of three conversions and one penalty by Jamie Fevre completed the scoring. Even with the win the team were a little frustrated with their error rate. Nevertheless, to beat the competition leaders is a great result and enabled us to leapfrog Stratford/Eltham on the points table. Next week Southern come to Rahunu for what is going to be a big game for us as now making the top four is becoming a real possibility.

Alan Crowley



Proud to be supporting
COASTAL RUGBY



Proud sponsors of the
Coastal Division 1



For Spreading, Fertiliser, Lime and Log Cartage

SUPPORTING THE COAST FOR OVER 50 YEARS! Opunake 761 7341 - Okato 752 4124



BUTLERS REEF

1133 Main South Rd, Oakura
Ph: 06 752 7765
www.butlersreef.co.nz



Taranaki 0800 889 880

GOLD SPONSORS



OKATO 4 SQUARE
06 752 4010



BDO
06 759 9034

Newton Gordge JOINERY
2016 LTD


67 Breakwater Road, Motorua
Phone 06 751 5065

NEWTON GORDGE JOINERY



John & Jacinta Hurley

**NEW PLYMOUTH
INGLEWOOD
STRATFORD
HAWERA**



Pennington Consultancy

ACCOUNTING AND TAX

Call us on 06 281 1565 or 027 4542 284
62B Carthew St, Okato



ANZ

HEARTLAND CONSTRUCTION

For new homes, alterations, roofing, kitchens, decks and all farm buildings.

For all your building requirements contact Phil 027 236 7129



Coastal Rugby gratefully acknowledges their support sponsors

B & R Barron Builders
The Print Shoppe
Rahotu Tavern
Opunake Coastal Pharmacy
Elite Farm Services
Farmlands

Brian Hill Builders
Okato Four Square
Mason Homekill
The Decorator Centre
Coastal Vets
Collins Sports Centre
Campbell Contracting
Geoff Cracroft-Wilson



COASTAL RUGBY

Colts score big home win

On May 26, the Corkill Systems Ltd Coastal Colts travelled to Tikorangi to play Clifton on a reasonably fine day. The boys were a bit flat during the warm up and it showed throughout the first half with Clifton scoring in the first few minutes. Come the second half and the boys started to play and dominate possession and manage to claw their way back into the game, but some good scrambling defence by Clifton resulted in Clifton winning 14 - 12.

Player of day was Mattie Hooper 2 points to Toni Hess (two points) and Rawiri Naniseni (one point). The next game was at Rahotu against Stratford/Eltham on a good fine day.

The boys wanted to put in a good performance after what happened in the first round. They started well and kept it up for the whole 80 minutes with strong work done by the forwards and good finishing by the backs, with one try going through most players' hands before scoring.

Opunake won 45-15.




Joel Perrett carries a few defenders as the Colts secure a good win.

Player of the day was Rawiri Naniseni to Mattie Hooper (two points) and

Kalyn Alyward (one point). A special congrats to Jackson Wright playing his 50 game for the colts. our next game is against southern at Rahotu

BLUE RIBBON SPONSORS



J.Swap Ph 0800 457 927
STOCKFOODS

Simpsons Tyres and Service Centre
22 Leach Street - New Plymouth
Ph: 06 758 0780 29

MICO PLUMBING
72/80 Molesworth St, New Plymouth 4310
Phone: 06-759 0372

EYE SCAN
29 Salcombe Terrace - 06-759 6969



COOKS HONDA
06 757 3612 NP | 06 765 8028 Stfd | 06 278 5972 Hw



BRIAN HILL
BD HILL BUILDING
Ph: (06) 752 4210 (027) 444 2703

PICKERING MOTORS
PH: 06 761 8363 - Tennyson St - Opunake
GO COASTAL!



Elite
FARM SOLUTIONS
23 Tasman St, Opunake
06 761 7265

Eftpos Specialists (Taranaki) Ltd.
113 Gill St - 06-759 4148

RAHOTU TAVERN
Ph: 06 763 8787



cruiseabout. Phone 06 758 4967
The Cruising Specialists

SINCLAIR ELECTRICAL
31 Tasman St, Opunake 2120
Phone: 06-761 8084

VALUE BUILDING SUPPLIES
VALUE BUILDING SUPPLIES 1 Katere Rd, New Plymouth
Ph 06 759 7435

KARAM'S
Clothes on the Coast
Surf Highway 45, Opunake - Ph/Fax 06 761 8139



Naki Bounce Kids birthday parties
Bouncy Castle Hire
Ph 0273354635
www.nakibounce.co.nz School Gala Days



Boehringer Ingelheim



COASTAL RUGBY

Women's team give Coastal first finals win of the season

On May 25, the Coastal Women's Rugby team travelled to Tikorangi to face an unbeaten and hot favourite Clifton side in the Women's Club Rugby Premier Final. Playing in wet and cold conditions we had many supporters from both teams who braved the cold to stand on the side lines to watch a good game of rugby. Due to the wet conditions the game was tough with Clifton scoring the first try of the game late in the first half. Coastal bounced back with a try in the second half of the game through Iritana Hohaia. Both teams missed their conversions so the score was 5-5. The game bounced between 22's and was a real arm wrestle and played with intensity like a final should. In the last five minutes of the game Coastal kept possession



.The champion Womans team after their epic final win.

of the ball in Clifton's 22 and with a set move off the scrum, Brooke Sim spotted

a hole in the defence and scored in the final minute to win the game for Coastal 10

-5. A fantastic finish to the season and the girls were stoked and already looking

forward to next season. First title for Coastal and something for the boys to try

and emulate.

Lisa Appert

Chiefs to play the Hurricanes in Hawera.

South Taranaki District Mayor Ross Dunlop is excited to announce that the Chiefs will be playing the Hurricanes on Hicks Park at the TSB Hub in Hawera, on Thursday June 21.

This is the farthest south the Chiefs Rugby Club have taken a game. The Club felt it was a fitting location for two passionate teams to go head to head and acknowledge the immense contribution to rugby of Hawera local Craig Norgate.

Mayor Dunlop says it was a real coup that Hawera was able to secure the match which would be played as a midseason 'friendly' game during the international window of the Investec Super Rugby season, while the All Blacks were playing France.

"It's fantastic to see the Super Rugby clubs returning to the provincial grass roots and giving fans, both young and old, the opportunity to see these elite players play on their home turf," says Mayor Dunlop. "And given the fact that Taranaki has been home to both the Hurricanes and Chiefs Super Rugby clubs, I'm sure there will be strong support for both teams."

Gallagher Chiefs head coach Colin Cooper was looking forward to visiting the strong rugby community.

"We are really looking forward to visiting Hawera to play the Hurricanes and meet the passionate Taranaki fans. It's a great opportunity to get some game time and preparation

under our belt in the June break before we go to Fiji to face the Highlanders. We're excited to come to Hawera and to bring a game to the Taranaki region and it'll be special to commemorate past Chiefs board member Craig Norgate for this game. Craig was a deeply competitive, intelligent and passionate man and it is fitting to play a game in the same spirit in his home town."

The Gallagher Chiefs team will host an open Captains Run training at Yarrow Stadium in New Plymouth on Wednesday June 20 and are looking forward

to meeting many fans throughout South Taranaki and New Plymouth over the two days.

The Gallagher Chiefs and Hurricanes share a fierce rivalry, and will be using this match as motivation to prepare for the business

end of the season. The teams will then face off again in the final round of the Investec Super Rugby competition on Friday July 13 in Hamilton.

The game starts at 1pm on Thursday 21 June and entry is free.

Tumahu golf results

Approximately 40 played in the field at the Tumahu Golf Club's multi-sponsored tournament held in April.

Best Nett 1st division men. R.Hayward. 2nd division R.Martin.

Ladies. A.Siciliano.

Barron Trophy. Men. L.Harvey. Ladies. J.Kennedy.

Ray Rook Trophy Men. R.Martin. Ladies. A.Siciliano.



Chiefs Coach Colin Cooper.

Value Farm Sheds

**FREE ON SITE
MEASURE & QUOTE**

Value Building Supplies farm buildings are constructed from quality materials that last, at prices you can afford. Visit our website for additional details: www.valuebuilding.co.nz

BuildLink Kitset Sheds come in various sizes and options.



1 KATERE RD, NEW PLYMOUTH
PHONE: 06 759 7435

JAMES ST, INGLEWOOD
PHONE: 0800 245 535

OPEN 7 DAYS

9.00am - 5.00pm Monday to Friday,
9.00am - 4.00pm Saturday and
10.00am - 3.00pm Sunday

30 Day Money Back Guarantee on all footwear

Locally owned and operated

87 DEVON ST EAST, NEW PLYMOUTH
PH: 06 758 5146
WWW.SHOECLINIC.CO.NZ

WE-749235AC

Kiwi women to take on the world in pool championships

Four of New Zealand's top female pool players are now competing in the United States at the Senior VNEA World Pool Championships. The Valley National 8-ball League Association (VNEA) is the largest global amateur pool organisation.

Sixteen New Zealand players have qualified for the tournament in Las Vegas and include senior female players Brooque Pologa (23), Denise Wilkinson (28), Kimberley Cullen (41), and Agnes Kimura (43). Attracting approximately 3,000 players, the VNEA world Championships runs from May 24 to June 2.

Auckland Kimberley Cullen did well at last year's competition, her first, placing runner up in the Women's 8 Ball competition, third in the Women's 9 Ball and fourth in the Scotch Doubles.

"There's a lot more expectation and pressure

this year, particularly from myself. This time I know what to expect though, especially being prepared to play for long days which may stretch from 9 in the morning to 11 or 12 at night," says Kimberley.

Former New Zealand Women's Snooker Champion Agnes Kimura is competing in the international tournament for the first time and is clear about the potential women have in this sport.

"In the early years it was a male-dominated sport but now we have Kiwi women worldwide who are champions in different codes of cue sports," says Kimura who recently beat Australia to win the Oceania Women's Team Snooker Championships in March with Kiwi team mates Kimberley Cullen, Lucretia Goodwin, and Nita



Women in pool: From left. Agnes Kimura, Brooque Pologa, Kimberley Cullen, Denise Wilkinson are four of New Zealand's top female pool players now competing in Las Vegas at the Senior VNEA World Pool Championships.

Clarkson. Two-time former VNEA Under 21 Female World Junior 8-Ball Champion Brooque Pologa agrees that gender and age are no factor

in the sport with mental focus making the greatest difference.

"I originally got into the sport because of my dad Joe, who is a very good

player. Pool is such a great sport because my dad and I can play in tournaments and compete equally with each other," says Pologa.

New Zealand will also

be competing in the teams World Cup where they will look to do one better than two years ago where they came runner up to Germany.

Taranaki surf lifeguard award finalists announced

The finalists for the 2018 Surf Life Saving Taranaki Awards of Excellence have been announced.

Every year, regional Awards of Excellence

ceremonies are held around the country to officially recognise Surf Life Saving New Zealand (SLSNZ) members for their hard work and dedication to surf

lifesaving in New Zealand. The Taranaki Awards of Excellence will be held at the Devon Hotel in New Plymouth on Friday June 8 and include lifeguards from

Fitzroy, East End and New Plymouth Old Boys Surf Life Saving Clubs.

The winners of each category from the Taranaki awards, are then automatically selected as finalists in the national SLSNZ Awards of Excellence, held in September, where national award winners are announced.

Joel Meuli, Club Support Officer for Taranaki says the awards are an important way to end a busy season and recognise the contribution lifeguards make to the community.

"These Awards of Excellence are the perfect way to say thanks to all our members who have poured in so much time and energy over the 2017-18 patrol season," he says.

"Taranaki has a strong Surf

Life Saving community so it was hard to select these finalists, but they have all proven themselves and we can't wait to celebrate with them," Mr Meuli added.

Taranaki Awards of Excellence finalists. Instructor of the Year. Anna Beavis (Fitzroy), Casey Stevens (New Plymouth Old Boys).

Lifeguard of the Year. Todd Cations-Velvin (Fitzroy), Rhys Donovan (New Plymouth Old Boys).

U19 Sportswoman of the Year. Hannah Baker (East End), Lucy North (East End), Sasha Reid (Fitzroy).

U19 Sportsman of the Year. Zac Reid (Fitzroy).

Sports Man of the Year. Javon McCallum (Fitzroy).

U19 Sports Team of the Year. East End Ski Relay team (East End), Fitzroy

U16 Board Rescue team (Fitzroy).

Sports Team of Year. NPOB IRB team (New Plymouth Old Boys).

Coach of the Year. Byron Reid (Fitzroy), Casey Stevens (New Plymouth Old Boys), Nicola Watson (East End).

Surf Official of the Year. Dean Spicer (New Plymouth Old Boys), Brian Velvin (Fitzroy).

Volunteer of the Year. Adam Fraser (Fitzroy), Paul Meuli (East End), Victoria Robinson (New Plymouth Old Boys).

Michael Taylor Award (awarded to the person who best embodies the "spirit of surf lifesaving")

Gerard (Gerry) Callebaut (Fitzroy), Liam Cole (East End), Dean Spicer (New Plymouth Old Boys).



For competitive pricing on all your rural cartage requirements - Give us a call today!

Taranaki wide

Phone 0800 707 404

IT IS TIME TO BOOK YOUR HEDGE MULCHING REQUIREMENTS

- * Tractor & Trailer Hire
- * Roller Drilling
- * Race & Road Sweeping
- * Deep Ripping
- * Hedge Mulching
- * PowerHarrowing

Call Jared today!

Call **Jared McBride** at

We's like to welcome all new sharemilkers to the district

JFM CONTRACTING

Phone 06 752 4558 Mobile 0274 775 701

Thunder aim for national title

Coach Angelo Hill is determined to bring the Women's Basketball Championship (WBC) title home to Taranaki and it is something that he believes his youthful Thunder squad is more than capable of doing. Hill is coaching the team for the third consecutive season, and is determined to improve on the team's fourth placing in 2016 and their second placing in 2017.

The Taranaki Thunder women's basketball team is the Taranaki region's only national female division 1 team in any sporting code. Even though the team made the final of the WBC in 2017 the Thunder still had to apply for Tier 1 status at the end of last year. The application put forward by newly appointed Campaign Manager Bex Langton, was met favourably by Basketball New Zealand, and the hard work in preparing the team for the 2018 competition began. Away games in Dunedin and Christchurch over the weekend of June 22, and a final tournament again in Dunedin, in early July, has put the costs to run the team in excess of \$30,000.

Fundraising efforts, through

the selling of raffle tickets and of Yarrow's cookies, have been well supported by the local community. The Mountainairs home games have provided the Thunder with a venue to sell raffle tickets, and Opunake businesses also did their part for the Thunder by selling raffle tickets in their stores. Some local businesses also provided the team with direct sponsorship. The Thunder gained enough money through fundraising to pay for all the costs associated with their first tournament, which was in Tauranga in early May. This tournament saw the Thunder face the Waikato Country Cannons, the Tauranga Coasters and the Waikato Wizards.

Opunake was well represented with coach Aarun Langton, assistant coach Haydn Langton and team manager Stephenie Langton taking the helm while Angelo was away in the United States, celebrating son Corban's graduation from University. Two losses and one significant win at this opening tournament were similar to the start that the team had last year.

Opunake is not only



Taranaki Thunder and New Zealand under 17 womens representative Isabelle Cook

represented in the coaching and management side of

the team but also with a number of players calling Opunake home. Simone Cook, Isabelle Cook, Eva Langton, Vanessa Weir, Caitlin O'Connell and Tara Clement are all members of this year's squad. Iritana Hohaia was also a member of the original squad but had to withdraw from this year's campaign due to other top level sporting commitments. Other Taranaki squad members include: Aliena Wallis, Emily Poole and Courtney Keech (Hawera), Katie Jones and Angela Chubb (Stratford), Raquel Sampson, and development player Gemma Walsh (New Plymouth). The team is rounded out with representatives from Hawke's Bay Rosalia Samia and Zoe Ebbitt, and Maia Watling and Nicole Cutler from the Manawatu region. Returning for a second season with the Thunder is Lyndi Laborn from the United States of America.

The Sandford's Event Centre, is the venue for the first of the Taranaki Thunder's two home games. Opunake was chosen to host this Division 1 game due to the town being well represented within the squad and team management felt it

was an opportunity to 'give back' to a town that has a long history of supporting basketball.

The Thunder face the talented Harbour Breeze in a highly anticipated match up on Sunday June 10 tipping off at 12pm. A door charge at the home games will also help to alleviate some of the costs associated with participating in this top level competition.

Bex Langton is confident that Opunake locals will get behind the team by coming along to the home games. "This is a great chance for our youngsters to be a part of a National Division 1 game in our home town. Basketball is a sport that continues to grow in popularity across the nation. It offers a real pathway for the future. Four members of our team have, or will be, taking up scholarships in the States, so it just shows that even if you are from a small town the opportunities available to you are there."

Tickets are \$5 for adults, \$2 for children (including high school students) and \$10 for a family (2 adults and 2 children). These tickets, along with raffle tickets, will be available for purchase on the day.

Taranaki Indoor Bowls

The Taranaki Indoor Bowls NZ Mixed Pairs playoffs were played at the Otakeho Hall on Saturday May 19. After section play the outright winners were Skip Rose Ratahi and lead Nigel Berry.

The Taranaki Open singles were played at the Kapuni Hall on Sunday May 20. After section play eight persons qualified. They were Paul Midgley Otakeho, T Bourne Cardiff, Andrea Berry Normanby, Rodney Morris Stratford, Don Semple Otakeho, Nigel Berry Normanby, Noleen Picard Turuturu and Sue Bourne Cardiff.

Play was 12 ends or 30 minutes. Quarter final results were: P.Midgley defeated T.Bourne 12-6.R.Morris defeated A.Berry 12-7. D.Semple defeated N.Berry 9-7. S.Bourne defeated N.Picard 10-4.

Semifinal results were: R.Morris defeated P.Midgley 12-7. S.Bourne defeated D.Semple 8-5.

The final between Rodney and Sue which was 12 ends with no time limit was a very close fought match. After six ends Rodney led 4-3 and after 11 ends Sue led 7-6. Accurate draw bowls by Sue on the final end scored her two points and the final

score was 9-6. Sue is the holder of the Kevin Boothby Trophy for one year and the Waipipi Cup for the lady going the furthest.

In the playoff for the G & J Hamley trophy for the junior who goes the furthest there was another close tense match. Nicole Bennett lead Jamie Pretty 8-5 after six ends, but Jamie had a 12-10 lead after 11 ends. Nicole drew two shots on the final end to square the match at 12-12 so an extra end was required and Jamie was the winner of this trophy scoring one point on the extra end for the 13-12 victory.

Eltham Smallbore results

Top score of the evening (May 4) went to Brian Hicks with a 100.5. Well done Brian on your second 100 shoot! He preceded that with a 94.2. Competition between Master graders Paul Tidswell and Garry Rowlands is going well with Garry scoring 98.4, 98.1 and 93.5, while Paul shot a 198.10.

Group card shooter Charlie McLeish shot well after a long absence scoring 99, 96, 97 while her father Matt shot 100 group followed by 87.0, 89.0. Keely Burnell 100 group and 89.2, 87.1. Visitor Frank Eustace 91.0, 96.4; Alan Drake 98.4, 93.1; Murray Chinery 91.1, 94.3; Bob Bramley 96.3, 94.1, 193.8; Clare Bramley 94.2, 99.5; Stephen Hicks 96.4, 93.1; Eddie Hagenars 89.0,

89.1.

A reasonable crowd attended Club night on May 7 with several good scores posted and yet another personal best to new-ish shooter Keely Burnell who started the night with a 100 group card, 91.1 and then an excellent 95.1, her third personal best in as many nights. Paul Tidswell scored an impressive 99.5 and 98.6 in a double card. Boston Taylor returned after his overseas trip proving he hasn't forgotten anything scoring 92.4 and 91.0, while Henry Armond also shot well with 91.3 and 95.1.

John McGill shot group cards scoring 97 and 98, his father Craig shot 100 and 99 in groups cards followed by 77.0. Garry Rowlands 96.3, double 97.2 and 99.2; Murray Chinery 91.1 (along with a practice

card that scored 95.2); Alan Drake 97.2 and 94.3 double; Bob Bramley 95.4 and 94.4 double; Brian Hicks 92.2, 96.4; Eddie Hagenars 87.0, 83.1; Gabriel Bielawski 100 group, 77.0.

Three members of the Eltham Smallbore Rifle Club were also chosen to represent Taranaki in the Teams of Ten tournament in Tauranga recently. Paul Tidswell, Bob Bramley and Clare Bramley all shot very well and the Taranaki team came third overall, which was a very good result. The team averaged 97 over each of their four cards, a fantastic effort. So well done to the team and to our three members in particular, especially given it was Bob's first Teams of Ten tournament.

Adult Riding Club secretary retires

At the Coastal Adult Riding Club's Annual General Meeting at Stratford on May 23, Heather Kooistra has stepped down after seven years of service and there has been a change of officers.

Those elected were:- President, Glenda Schumacher, Secretary and Membership officer,

AnnaLee Innes, Treasurer, Claire Norton, Newsletter and Rally co-ordinator, Linda Huitson, Publicity Officer, Maureen Drylie, Gear Officers, Glenda Schumacher and Kath Lambourn, Health and Safety, Heather Kooistra and Sherriff, Lynne McLennan.

The Annual dinner will be held at Midhirst on July 8.

Mania Golf results

Saturday Men. Nett. Jim Ngere 66. Logan Kennett 73. John Oliver 73.

Junior. Carter Symes beat his Dad 3/2.

WANT TO DO BUSINESS IN OUR AREA?



Opunake and Coastal News is distributed free to every home & business within the rural area, bounded in the north by the New Plymouth city border, extending east to Egmont Village and around to the edge of Stratford, south to Hawera city border and inland to Kaponga & Eltham.

We want to be involved with your business.

Call today and discuss your marketing options with us.



OPUNAKE & COASTAL NEWS

Promote your business or event in our area, call us on:

Ph/Fax: 06 761 7016 - 23 Napier Street, Opunake
or e-mail us: ads@opunakecoastalnews.co.nz

Match-making service on offer to Kiwi farmers

The largest match-making service in the world is proving popular with Kiwi dairy farmers to secure the most suited partner for their dairy cows.

Northern Irish breeding specialist, Dennis Torrens was recently in New Zealand to train the World Wide Sires NZ team in the use of a mating service based on millions of bloodlines across 58 countries around the world.

Dennis says the value of the mating service was brought home to him when he worked for the Almarai Company on Al Danah Super Farm in Saudi Arabia.

“Almarai is the largest dairy company in the Middle East producing more than 1 billion litres of milk from 100,000 cows across multiple herds. The sheer number of cows meant the only way each mating could be personalised – to maximise the genetics of each cow and avoid inbreeding – was through the World Wide Sires Mating Programme,” Dennis Torrens said.

“That was my first introduction to the program and I was impressed with the sheer size of the database



Dennis Torrens loves explaining the benefits of the World Wide Sires mating programme.

and its ability to significantly increase the genetic value and productive output of each generation.”

Dennis’ passion for the program led to him being

offered a position with World Wide Sires. He is currently based in Northern Ireland as part of the World Wide Sires UK team but travels the world speaking

to cooperative staff and farmers about the program.

“Farmers around the world share a common goal – for each generation of cow to be better than their mothers.

This program does that and, as a consequence, demand is increasing in all dairy markets.”

Dennis Torrens says the mating programme is

effective for cows with and without records.

“With pedigree animals it’s simply a matter of entering the breeding of the sire with the farmer’s breeding criteria and the program recommends the best bulls across all genetic companies in the world.

“All we need for cows which are not pedigree is some insight to their genetic makeup and the programme works with that producing a list of the best sires.”

More than 7 million cows in 58 countries were mated through the World Wide Sires Mating programme in 2014 and the number is growing.

“Farmers around the world share a common goal – for each generation of cow to be better than their mothers.”
Dennis Torrens.

Next issue due out June 21. Phone (06)761-7016 to advertise.

The WWS Difference.

“We’re not focused on BW and we are not reliant on stock sales.

Milk solids are everything and man, our cows can milk!”

Join the Revolution.



WORLD WIDE SIRES • NEW ZEALAND



www.wwsiresnz.co.nz
Email: office@wwsires.co.nz • Free Phone: 0800 60 70 70

Eight vie for Rural Catch at Field Days

Four men and four women from around the country have been named as the 2018 Fieldays Rural Catch finalists, vying for the coveted Golden Gumboot and an impressive prize pool. Not only are the finalists a catch for any potential love interest but their rural skills and knowledge of agricultural business makes them a catch for any employer, business partner and the wider ag-industry.

These finalists have the opportunity to find fame, fortune and love with all eyes on them. They will have the chance to mingle and charm their fans, both at the Fieldays and various evening functions during the week. The competition is exclusively for singles, but you won't find any rose ceremonies here.

The Competition

The all-expenses-paid competition then begins on Sunday 10 June 2018 with the Farmlands Road Trip, giving finalists the chance to get to know each other and try their hand at some challenges and activities before the serious stuff begins on Wednesday 13 June.

After searching the country, four eligible rural males and four eligible rural females will represent the farming community in a week-long, all-expenses-paid trip. Finalists will compete in daily challenges designed to test their skills both on and off the farm, as they

compete to take out the title of Fieldays Rural Catch of the Year 2018. Berny Hall (29). : New Plymouth, Taranaki. Not afraid to put himself out there and have a bit of fun Berny is passionate about sustainability and how we feed the world. Berny currently works in between his family farm and neighbours place, will be taking up a 50/50 sharemilker role in June.

Lilly Newton (21). Urenui, Taranaki. You'll hear her before you see her, she's outgoing and loves a good yarn. Lilly works on a sheep and beef farm focussed on fattening lambs, dairy grazers and angus breeding and works part time for Precision Helicopters as a helicopter

Load Master. She's also caring and thoughtful towards animals and passionate about women in male dominated careers.

manages three farm staff and oversees the day-to-day management of an 800-cow farm out of Taranaki where cows are milked through a

fully automated rotary shed and fed supplement year-round on a feed pad. Sam is motivated and focused, enjoys working with cows

and machinery and seeing the land develop, and is interested in shrinking the rural/urban divide and supporting his community.



Berny Hall (29). : New Plymouth, Taranaki.



Sam Hughson(21). Hawera, Taranaki.



Lilly Newton (21). Urenui, Taranaki.

NEW PLYMOUTH Motorcycle Centre

SUZUKI

FIELDAYS SAVINGS



No deposit on 4.95% interest over 12 months. Normal lending and credit criteria apply. Come see us this Fieldays on site F86-F92, or talk to your nearest Suzuki dealership today. Price excludes GST. Offer not available in conjunction with any other promotion. Offer runs from 1 May to 31 July 2018, or while stocks last.

LT-A500X KINGQUAD 500 4X4 AUTO

\$11,995 EXCL. GST

FINANCE ON 0% DEPOSIT OVER 12 MONTHS AT 4.95% INTEREST

- Liquid cooled fuel injected 4-stroke
- CVT transmission with Hi/Lo ratio and reverse
- Push button 2WD/4WD select with diff-lock option
- Independent front and rear suspension
- Disc front brakes
- Fully sealed oil-bathed multi-plate disc rear brake
- Comfortable T-shaped seat
- 24 Month/15,000km warranty

SUPER STOCK SELLOUT!

58-62 Leach St, NP | Ph 06 758 4449
www.newplymouthmotorcycles.co.nz

SUZUKI Way of Life!

NEW PLYMOUTH Motorcycle Centre

SUZUKI

FIELDAYS SAVINGS



No deposit on 4.95% interest over 12 months. Normal lending and credit criteria apply. Come see us this Fieldays on site F86-F92, or talk to your nearest Suzuki dealership today. Price excludes GST. Offer not available in conjunction with any other promotion. Offer runs from 1 May to 31 July 2018, or while stocks last.

LT-A/F400F KINGQUAD 400 4X4 MANUAL/AUTO

\$10,495 EXCL. GST

FINANCE ON 0% DEPOSIT OVER 12 MONTHS AT 4.95% INTEREST

- Electronic fuel-injection
- 4-stroke, 4 valve engine
- Selectable 2WD/4WD with Hi/Lo ratio and reverse
- Torque-sensing limited slip front differential
- Disc front brakes and sealed rear brakes
- Twin shock solid rear axle
- Comfortable T-shaped seat
- 24 Month/15,000km warranty

SUPER STOCK SELLOUT!

58-62 Leach St, NP | Ph 06 758 4449
www.newplymouthmotorcycles.co.nz

SUZUKI Way of Life!



CAMPBELL CONTRACTING LTD

DIRECT DRILLING

HIAB TRUCK

RACE MAINTENANCE


ROLLER DRILLING


GENERAL CARTAGE

HEDGE MULCHING



VS





Proud to be match day sponsor.

Welcome to all our Coastal and Southern Clients.

Come along for a beer and feed.

Saturday June 9

Rahotu Club Rooms



Rusty 027 280 0743

www.campbellcontractingltd.com

Michaela 027 274 5662

NIWA urges farmers to prepare for climate change

NIWA is encouraging farmers to plan for climate change so they can maximise their abilities to adapt and

thrive as significant change begins to take place.

Dr Sam Dean, NIWA's chief scientist of climate,

says while farmers are known for their resilience and ability to adapt to changing conditions, climate change will almost certainly go beyond any previous experience.

NIWA is focusing on assisting farmers to plan for a changing climate at its Fielddays stand next week. Using highly detailed computer graphics, farmers will be able to find out what climate change might look like on their farm, and explore the choices they face.

"I want people to be informed to make decisions based on good science," Dr Dean says. "And I think it's important we try to understand how much climate change is likely to affect New Zealand in the years ahead."

Climate changes expected for New Zealand include an increase in the mean annual temperature across the country even if global greenhouse emissions

stabilise. There would be fewer frosts and more hot days where the temperature will be greater than 25°C. Changing rainfall patterns will mean more rain in the west and south and less in the east and north, and more extreme rainfall events with more rain, more flooding and stronger, more damaging winds. There will also be more drought in some parts.

Dr Dean says New Zealanders are in the "unique position of knowing what our choices are".

"Once you understand significant change is coming, and some of it is now inevitable, planning

how we will adapt and thrive becomes a priority. We believe that optimising current farming practices is one of the most effective adaptation strategies."

Farmers can expect climate change to affect a range of on-farm activities, including harvest times, crop choice, productivity, irrigation, groundwater recharge and pasture growth.

Extreme weather events could also put strain on water resources or lead to flooding and damage to infrastructure.

Farmers visiting NIWA's Fielddays stand this year will also be able to play a large

board game that pits natural disaster against planning ahead. Farmers can also collect a workbook that acts as a starting point for developing a farm business climate change strategy. It is intended to provide a framework for thinking about the challenges and opportunities climate change will bring.

NIWA offers a range of services designed to help farmers and growers make confident and informed operational decisions, such as when and where to irrigate, fertilise, spray, harvest and move stock.



FLEXI TANKS NZ



EFFLUENT & WATER
021 289 5999 ANTON
www.flexitanksnz.com

Coming to Mystery Creek



Visit Jacky and Anton of Flexi Tanks at Fielddays.

**WHY WAIT?
TRADE IN NOW.**

Beat the rush and take advantage of this incredible Fielddays® offer at Coastal Agri Services today.

\$1000 OFF Super & Medium Class Models
\$500 OFF Selected Compact Class Models

Terms & Conditions Apply

Come and see us at stand K1-K3 this Fielddays® 13-16 June, Mystery Creek



www.karcher.co.nz

KÄRCHER
makes a difference

Please contact us for more information:

Coastal Agri Services
Tasman St, Opunake
P: 06 761 7079

Our promise 'Peace of Mind' - 24 hr Service, 7 Days a Week



This newspaper is subject to NZ Press Council procedures. A complaint must first be directed in writing, within one month of publication, to the [editor's/website author's] email address. If not satisfied with the response, the complaint may be referred to the Press Council P O Box 10-879, The Terrace, Wellington 6143. Or use the online complaint form at www.presscouncil.org.nz Please include copies of the article and all correspondence with the publication.

Corkill Systems a regular at Mystery Creek

Held every year at Mystery Creek near Hamilton, Fieldays is billed as the largest agribusiness event in the Southern Hemisphere. This month it will be marking 50 years, and Steve Corkill of Corkill Systems has been there for 25 of them exhibiting in his own right.

He has actually made the trip to Mystery Creek more times than that, having previously assisted on stands with others.

"Mystery Creek has changed a lot," he says. "There are more people and more exhibitors than there used to be. They have sealed the tracks so you don't have the mud or the ice you used to get. The exhibits are more diverse. You can buy pots and pans, and you can buy monstrous machines as well."

"The thing I most like is getting to see my clients. It's the one on one contact I enjoy. I have returning clients from all over the country and we can talk about their individual problems. No two dairy farms are ever the same."

He also enjoys catching up with other exhibitors he has got to know through going to Mystery Creek every year.

Twenty five years ago, visitors to his stand were mainly interested in talking to Steve about dairy shed



Generators are a big part of Steve Corkill's business.

energy efficiency and controlled milk pumps.

"These days it's backup power supplies and milk quality and cooling," says Steve. "Milk cooling and quality and generators are

the things that are the hot subjects at the moment."

Being based in Opunake, generators have been in hot demand this year with former cyclone Gita slamming into the Taranaki coast on February 20, followed by a tornado tearing through Rahunu seven weeks later. On both occasions power was out for many.

Steve has been importing, selling and servicing generators for many years already, the latest weather events have brought to light a much greater demand which Steve had not previously been fully geared up for.

"Although lots of people sell generators, they don't always have the facility to test or repair them," he says.

Not only is Steve able to do this, but he carries spare parts for them as well.

He says he has four container loads of generators on the go. The latest 40 foot

container arrived last week and nearly 90 per cent of the generators in it have already sold. Another container is "on the water," another is being manufactured, and he is taking orders for a fourth one.

The CSL Chillboost which Corkill Systems developed in response to new regulations on milk cooling has also attracted a lot of interest.

"We realised many farmers were marginal in their compliance with the new regulations," says Steve. "This gizmo optimises their current systems and makes the best of what they've already got. It costs so little it's worth a punt for most people."

So far he has sold more than 300 of these all around the country.

In the course of his work, Steve travels around the country catching up with clients, and he will be doing so again once Fieldays have finished. Any orders taken at Mystery Creek will get free delivery anywhere in the country. For larger generators he will visit the farm to check out that everything is going well.

The Opunake & Coastal News is available at newstands in:

New Plymouth - Challenge Spotswood, The Health Shop, Westside Grille

Waitara - Outside North Taranaki Community House Trust

Stratford - Perera's Paper Power

Hawera - Outside First National

GET YOUR LAWNMOWER & CHAINSAWS SERVICED HERE!
We service all types of LAWNMOWERS, BIKES, CHAINSAWS & ROD & REELS.

**STARTING PROBLEMS?
NOT ANY MORE...**



I will match any field day specials on STIHL and HONDA products

COLLINS SPORTS CENTRE

Tasman St. OPUNAKE Ph 761-8778
OPEN SATURDAY 9AM TO 12NOON



Corkill SYSTEMS LTD

5 TASMAN ST, OPUNAKE

FREEPHONE: 0800 107 006 PH: 06 761 7531 - FAX 06 761 7336

We offer a range of
Silent Diesel and Industrial Tractor Mount Power Generators
There is a full range of cabling and outlet options to suit your personal requirements.

- Dials facing cab (one man operation)
- Heavy Duty Driveshaft
- Heavy Duty Construction
- 1000RPM Direct PTO Driven (no gearbox or belts)



Three Sizes to Suit all sheds:

37.5 kva 62.5 kva 93.5 kva Other sizes available on request



Check out our new website

www.corkillsystems.co.nz

TRADES & SERVICES

McNEIL DECORATING
- for all your painting and decorating. Ph: Jason McNeil 027 233 4584

COASTAL STOPPERS. Phone Glenn 027 524 5745

HEARTLAND CONSTRUCTION for building houses. Ph 027 236 7129.

HEARTLAND CONSTRUCTION for building decks. Ph 027 236 7129.

QUALITY PAINTER AND PAPERHANGER - Ph: Bryan McNeil 027 465 8631

CARPETS second hand, large selection After Disaster Ltd 223 Devon St West, NP. Phone (06) 769 9265

MASSAGE THERAPIST & Naturopath. Tired and aching back? Michelle's Massage & Health. Ph. 06 752 49691 or 027 278 4009.
LAWNMOWING and section maintenance by local contractor SOS. Free quote. Ph 027 605 8437

Rahotu Panel and

Paint for Insurance claims
Plastic welding
Rust repairs
Rustproofing
Batteries
Dent removal
Fibreglassing
RAHOTU PANEL AND PAINT.
Phone: 027 487 7746

Foodbank New Zealand
OPUNAKE AND DISTRICTS
FOODBANK AGM
19th June 2018
3.30pm Coastal Care Community Lounge
All welcome, tea and coffee provided, volunteers always needed

Thank-You
I would like to extend my sincere thanks to everyone who helped and cared for me after my accident on Tasman St, recently. Special thanks to our local Police officer Kylie Brophy for your care, and understanding reassurance, you were a great help.
Thanks to all,
Owen Olliver.

NGATI TARA
26B AGM
June 23, 2018
Sandfords Event Centre, Opunake 11am
Apologies
Trust Report
Elect two trustees
General
D. Ratahi - Trustee

WANTED TO BUY
SCRAP METAL - for all scrap metal Taranaki wide, give us a call. Molten Metals (06) 751 5367.
www.moltenmetals.co.nz

Next issue due out June 21. Call 06 761 7016 to be in it!

PUBLIC NOTICES

Advertisers who put in public notices and display adverts in the What's On Section for events are welcome to additionally provide extra editorial and photos **FREE OF CHARGE**, to help promote the event.

COASTAL COMMUNITY TRANSPORT AGM
19th June 2018
10am Coastal Care Community Lounge
All welcome, tea and coffee provided, volunteers always needed



Opunake and Districts Business Association
Annual General Meeting
June 11th 2018
5.30 pm in The Board Room, Hughson Building, Napier Street, Opunake
Guest Speaker:
His Worship, The Mayor of STDC, Ross Dunlop.
Following the meeting a small meal will be served.
RSVP for catering purposes to Liz Sinclair,
Ph 02108298058 or email pihamalavender@outlook.co.nz

MISSING!
Answers to Franklyn or Frankie.



Our beautiful boy Franklyn (who also answers to Frankie) is missing and we need help finding him. He was last seen on Ahu Ahu Road on Thursday 25th January. He is a long haired, neutered, ginger boy and may have gotten scared off when there was a cat fight on the road. Please check your sheds or sections if you live in the area.

If you have seen him or have any information please call:
Audrey on (06) 752 1005 or 021 128 8223
OR Chinta on 021 255 1542

P.D. FLEMING LOGGING LTD

Forestry rigged & certified 33 ton loader, National Certificates in Forest Operations, Health & Safety approved. Free assessment on what your trees are worth \$\$\$
Ph: Paul
027 630 9922 or email: paulflems@gmail.com

FOR SALE

SOME MEDICATIONS, stress, allergies, poor diet can depleted coenzyme Q10, the body overtime becomes exhausted, call into The Health Shop Centre City for a free sample, see how it helps. 067587553
BUILD YOUR RESISTANCE, help with pain and inflammation with Ester C 100 tabs 1000mg, save \$10 at The Health Shop in Centre City. 067587553 We care.

INFLAMMATION causes pain, turmeric has been found to be very beneficial in treating joint pain, any inflammation, call into The Health Shop Centre City for a free sample, and find out how it helps you. 067587553

YAMAHA QUAD BIKE 4WD \$950. Trailer 8'x4' \$950. Ph 06 756 5811



SITUATIONS VACANT

OPUNAKE & COASTAL NEWS

The Opunake & Coastal News is looking for someone with an interest in marketing and with experience in working in newspapers generally to help relieve the editor who needs help with her multiple roles and who would like to take a short break.

Please send CV and covering letter to:
Editor
Opunake & Coastal News
PO Box 74, Opunake or email: bernice@opunakecoastalnews.co.nz

The Opunake & Coastal News is available at newstands in:
New Plymouth - Challenge Spotswood, The Health Shop, Westside Grille
Waitara - Outside North Taranaki Community House Trust
Stratford - Perera's Paper Power
Hawera - Outside First National

Coastal Welders
027 255 8677
06 752 8138

HAVE YOU BOOKED YOUR WINTER SHED MAINTENANCE YET?

Call today!

We are a local company training local people.
Email us at coastalwelders@xtra.co.nz
WAREA

CHURCH NOTICES

Opunake & Okato Co-operating Parish CHURCH SERVICES

St Paul's Opunake Co-op & Rahotu Opunake Cooperating Parish St Pauls, Havelock St 9.30am every Sunday and the Rahotu - Wesley - 11am first Sunday of the month
Oakura - St James - 10am, 2nd & 4th Sundays
Okato - St Pauls - 10am, 1st & 3rd Sundays

Opunake Catholic Church

Sunday 8.30am at Pungarehu (St Martins), 10am at Opunake (Our Lady Star of the Sea)
Other areas
Manaia - Sacred Heart - 1st, 3rd Sat at 5pm (2nd, 4th & 5th Sat at Hawera's St Josephs)
Kaponga - St Patricks, Sunday 8.45am
All welcome

The Wave

Pentecostal Church 64 Domett St, Opunake
Sunday Services 10.30am
Women's Group 10.30am Tuesday
Men's Group 7pm Wednesday
Youth Group 7pm Friday
Come along or contact Pastor Murray 027 688 7378

St. Barnabas Anglican Church

141 Tasman St, Opunake
Sunday Services 10am
Communion 2nd, 3rd & 4th Sunday
Prayer & Praise 1st Sunday
Every 5th Sunday all 4 churches gather for a Combined Service

Okato Community Church

Meets 6.00pm Sunday at Hempton Hall.
Everyone welcome

RONALD HUGH MORRIESON Literary Awards 2018

MORRIESON LITERARY AWARDS

FREE JUDGES WRITING + POETRY WORKSHOPS

SATURDAY 9 JUNE HAWERA

COMPETITION OPENS WEDS 6 JUNE 2018

POETRY WITH AIRINI BEAUTRAIS
SHORT STORY WITH MARY-ANNE SCOTT

VISIT SOUTH TARANAKI.COM FOR MORE INFORMATION

THANK YOU TO OUR SPONSORS:
LYSAGHT-WATT TRUST, NORMANBY & DISTRICTS LIONS CLUB AND TARANAKI DAILY NEWS

PUBLIC NOTICES



Taranaki Taku Tūranga - Our Place

Towards a Predator-Free Taranaki

Help protect and enhance Taranaki's wildlife and native bush

Join: www.trc.govt.nz

What's On Listings



JONATHAN YOUNG

Need to chat with your Local MP Jonathan Young? Jonathan will now hold his meetings at Coastal Care. For more information phone: 06 7591363. Or email newplymouthmp@parliament.govt.nz

OPUNAKE BUSINESS ASSOCIATION

Usually meet on the 1st Monday of each month.

OPUNAKE COUNTRY MUSIC CLUB

Second Sunday of each month at the Opunake Town Hall, 1-4pm. All welcome

MOVIES AT EVERYBODYS THEATRES IN OPUNAKE

Playing several days and nights each week. Refer timetable in newspaper.

SCHNITZEL NIGHT

Every Wednesday at the Stony River Hotel, Okato

COASTALCARE – LISA KEEN AUDIOLOGY

Wednesdays 9am - 5pm, for an appointment call 027 591 4222 - 0800 555 676

TAI CHI BASICS

Thursdays 9am – 10am at Coastal Care Community Room

NIGEL CLIFFE ACUPUNCTURE

Thursdays 11am-4pm at Coastalcare, Opunake.

CLUB HOTEL TEXAS HOLDEM POKER

Wednesday and Thursday Nights at the Club Hotel.

CLUB HOTEL POOL

Tuesday Nights. New players welcome.

COASTAL YOUNG FARMERS

Meet 2nd Thursday of every month at 7pm at the Okato Bowling Club.

TARANAKI COUNTRY MUSIC HALL OF FAME, MANAIA

Running every Thursday night from 7.30pm, 11 Surf Highway, South Road, Manaia.

EGMONT EUCHRE CLUB

Meets every Thursday 1pm at the Opunake Bowling Club

CAPE EGMONT HISTORIC LIGHT & MUSEUM

Open 11am – 3pm weekends, Bayly Road, Warea.

ELTHAM BUSINESS ASSOCIATION FRIDAY MARKETS

8am to 1pm, Carpark of Touch Point, High Street, Eltham.

PREGNANCY HELP TARANAKI

Is now in OPUNAKE! Are you pregnant? Do you have a baby or young family? To hear more, like us on facebook www.facebook.com/preghelptaranaki/. Please come and meet us and find out how we may be able to help you.

OPUNAKE FRIENDSHIP CLUB

Meeting last Monday of each month in Opunake Town Hall at 1.30pm. All welcome.

TAINUI DAY CENTRE - ST BARNABAS CHURCH HALL, 141 Tasman Street Opunake.

Each Monday at 10 am - 12:30 pm. \$2 donation. Join us for "Steady as you Go" gentle, happy exercise. Enjoy morning tea, over any discussion which is topical or deemed helpful. Chose a quiet game or join in with bowls or golf. If preferred just sit and watch. Stay as long or little time as you feel comfortable; but be assured of a very warm welcome.

From time to time we invite speakers from different organizations who would prove most interesting and beneficial.

We look forward to seeing all our regular folk and meeting new members; we feel sure you will soon make new friends or find someone you already know.

Need more information call Jenny 7628080 or Glenys 6558025, they will be pleased to help.

ART EXHIBITION NATIONAL COMPETITION WITH LYSAGHT WATT GALLERY

May 4 to June 10 at the Lysaght Watt Art Gallery, 4-6 Union St, Hawera. Refer advert from last issue for details.

FAMILY WORKS 'GROWING TOGETHER' SUPPORT GROUP WORKSHOP

Thursdays from May 10 to June 14 at Opunake Co-operating Parish.

'WALLS' EXHIBITION AT THE VILLAGE GALLERY

Opens May 11. Refer advert from last issue for details.

OPUNAKE SURF LIFESAVING CLUB AGM

June 10 at 11am. At the Opunake Surf Live Saving Clubrooms. Refer advert for details.

OPUNAKE & DISTRICTS BUSINESS ASSOCIATION AGM

June 11 at 5.30pm in the Board Room at Hughson's building, Opunake. Refer advert for details.

TARANAKI GEOLOGICAL SOCIETY MEETING

Monday June 11, at 7.30pm. Speaker - Mark Hearn (Todd Energy): "Development of an Onshore Taranaki Gas Field". Venue: NPGHS Social Science Block Room O6. All welcome. For further details contact Robert Park (0211038573) or Mark Robbins (06 753 9930).

OPUNAKE LIONS CLUB CASUALTY CALF COLLECTION

All interested groups and organisations for this year's collection please contact Eric Ardern before June 15. Refer to advert for details.

OPUNAKE BOWLING CLUB AGM

1pm Saturday June 16 at the Clubrooms. Refer advert.

OPUNAKE COTTAGE REST HOME FUNDRAISER

At the Opunake Bowling Club Saturday June 16. 7pm start. Refer ad for details.

COASTAL COMMUNITY TRANSPORT AGM

June 19, 2018 at 10am Coastal Care Community Lounge. Refer advert for details.

OPUNAKE AND DISTRICTS FOODBANK AGM

June 19, 2018 at 3.30pm Coastal Care Community Lounge. Refer advert for details

NGATI TARA 26B AGM

June 23 at 11am. At Sandfords Event Centre, Opunake. Refer advert for details.

Connecting COMMUNITIES

Local people

Local news

Local opinions

Local ownership

Your community newspaper, part of the independent community newspaper network.



www.cna.org.nz

Taranaki Arts Trail

Annual trail showcases Taranaki art



Linda McFetridge Painter
 Current Artist in Residence at Koru on Devon Gallery in New Plymouth's CBD. Okato-born, Linda comes from a performing arts background. In 2002 Linda moved into film and screen industry in Auckland finding a niche as a movement coach and casting director. Working with images through the camera led to a natural progression from performing arts to visual arts.

Established in 2014 the Taranaki Arts Trail provides the public with the unique opportunity to meet with over 70 artists in their studio/workshops. Ultimately, the aim of the Taranaki Arts Trail is to build a greater understanding in the community of the processes involved and the skills required, in creating a work of art.

These are North, East, South, and West.

The artist's studios and workshops are open from 9.30am to 4.30pm every day from June 9-11. Admission is free.

To assist the visitor with planning their self-guided tour of the Taranaki Arts Trail, it has been divided geographically into four

Visually inspiring, the volcanic landscape of Taranaki, with its ring of wild coast beaches, green and pleasant land, myriads of clear streams and bush covered slopes, all providing a beautiful backdrop to a fascinating weekend event held annually in June each year.



Chris Wells – Sculptor Digital artist- Chef
 This young man brings colour and shape to our native ponga. Following the natural contours of his chosen medium Chris tests our imagination with the faces and symbols discovered in the knots and shape of this well aged in the local bush medium.



Chris Wells and Fay Looney at Koru on Devon.

Under New Management
Indian and light European Meals *
 Coffee, Cocktails & Mocktails *Breakfast and lunch

Winter Special
 All mains
 Mon-Tues-Wed
\$12.99

OPENING HOURS:
 11am - 2pm, 5pm - 9.30pm
 Open 7 days a week

- Dining In
- Takeaways
- Deliveries available

HEADLANDS
Indian Restaurant

4 Havelock St,
 Opunake
Ph: 06 761 8358

Studios open daily
 9.30 am - 4.30 pm
 Admission is Free

Taranakiartstrail
 9/10/11 June 2018
 www.taranakiartstrail.co.nz

PH: 06 761 7062
 42 - 44 TASMAN ST
 OPUNAKE

Sugar Juice Cafe
 where everything's sweet and juicy

**Delicious new dishes
 and all your old favourites.
 Legendary!**

**Come and relax in our gorgeous refurbished
 garden. Try out our new snug room.**

Open 8am-4pm Tues, Wed, Sun
 & 8am-9pm Thurs, Fri Sat
 42-44 Tasman St, Opunake
 Ph 06 761 7062 - Bookings essential

WINTER'S HERE!
 New menu coming soon!
 Mulled wine is back

ALL BLACKS
ALL BLACKS VS FRANCE
 June 9, 16 & 23 - 7.30pm
 Come and watch on one of our seven big screens

Happy Campers Band
 Sat June 16 - playing after the All Blacks game

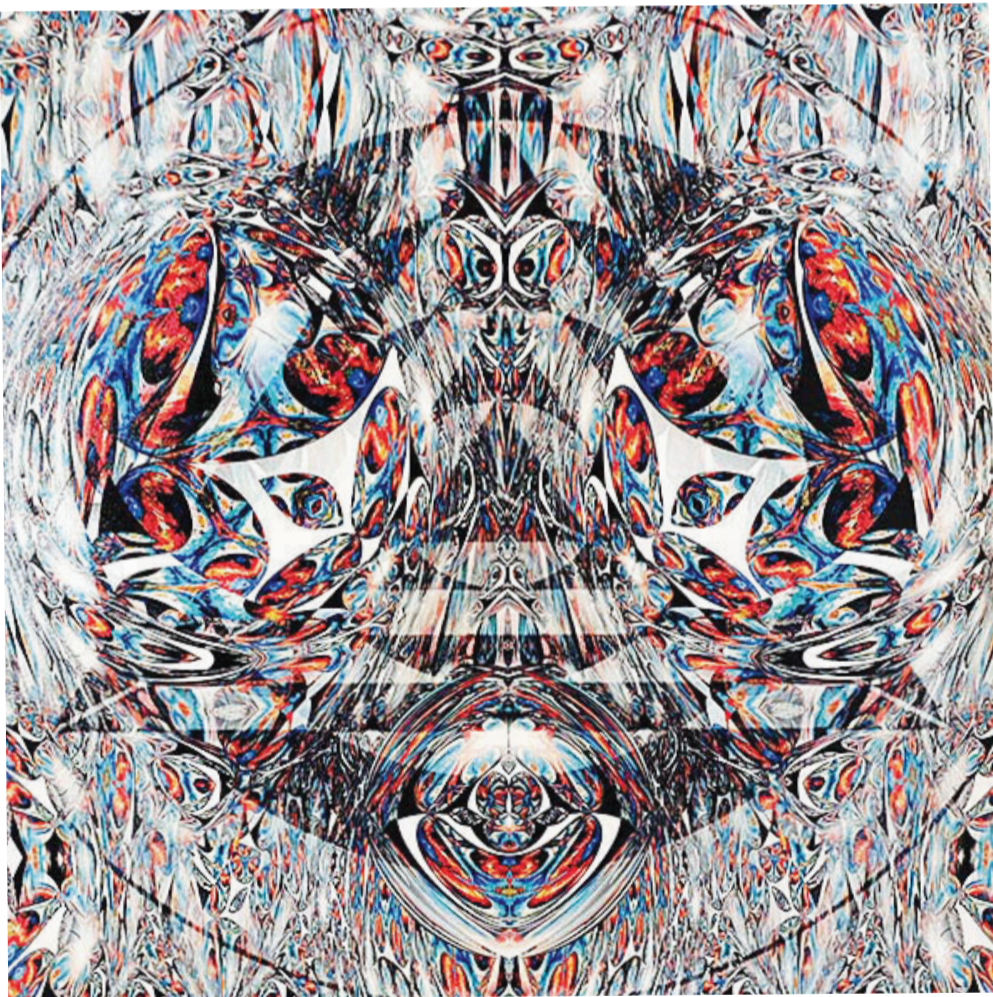
1133 Main South Road, Oakura
06 752 7765
 www.butlersreef.co.nz

Taranaki artists feature at Koru Galleries



Fay Looney Photographer

Fay Looney's Koru on Koru Gallery will be where you will find her over the Arts Trail weekend, along with Lester Earl and Chris Wells, Printing on brushed aluminium has bought a new perspective to Fays' work as it reflects light, on water mountains and landscape's giving movement to her work.



Lester Earls Painter

Organic acrylic and oil semi abstract landscape paintings are proving to be very collectable. His aim is to capture the mood and feeling of a place giving an idea of its character. He strives to appeal to the viewer but also retain the interest after repeat viewings.

Koru on Koru Oakura and Koru on Devon New Plymouth proudly feature Taranaki artists in both galleries over the Taranaki Arts Trail weekend.

The not for profit brand "Koru Galleries" celebrates the creativity just outside the front gates for those travelling around the iconic Taranaki coast."

Chat to Lester Earl, Chris Wells Fay Looney and Linda McFetridge on the trail

Check out the exhibition space at Koru on Devon where Linda will be in her studio space, plus two featured artists Raukura Turei and Kerry Casey, both with strong Taranaki connections. Then again, there are the Koru Galleries artists in both galleries.



Raukura Turei Painter



Koru on Koru
Sculpture garden & gallery
283 Koru Rd. Oakura
Featured artists
Taranaki Arts Trail weekend
9th 10th 11th June

Lester Earl - painter
Chris Wells - Sculptor - painter
Fay Looney - Photographer

Koru On Devon
18b Devon St. West

Linda McFetridge - painter
Raukura Turei - painter
Kerin Casey - painter



90 Tasman St, Opunake - Ph: 06 761 8550

Arty Tarts

*Genuine Home Cooked Food, Pies,
Savouries, Fresh Scones, Muffins,
Cakes, Slices and Sandwiches.*

All Day Breakfast

Open 6am - 4pm

Open 7 Days a week



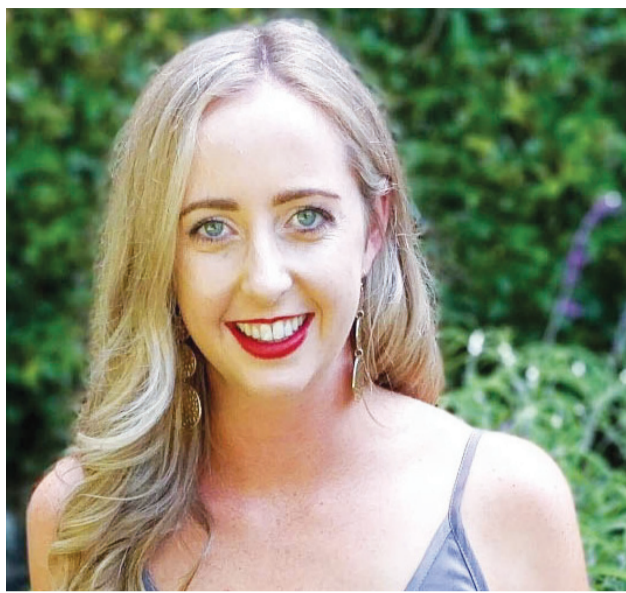
Open 10am till late 7 days
41 Tukapa St - Westtown - New Plymouth
Phone: 06 758 4430
Email: howdy@westsidegrille.com

NZ Rose of Tralee coming very soon

The 2018 New Zealand Rose of Tralee Selection will be held in New Plymouth 7-10 June. Taranaki is the host region this year as Niamh O'Sullivan won the New Zealand title last year. It has been 5 years since the Taranaki Irish Social Club Inc hosted this event and the year that Carac Group crafted and donated the current NZ Rose trophy. This prestigious event unites the Irish societies and supporters of New Zealand and, although the Roses are from the different regions, some have family connections in Taranaki.

Erin Annabell is our Taranaki Rose for 2018 and along with our reigning New Zealand Rose Niamh they will welcome the NZ regional Roses to the province. Both were interviewed by Bryan Vickery on his breakfast show Radio Hokonui recently talking about the coming events, which you can view on the Taranaki Irish Club facebook page.

The Seven Regional Roses will arrive Thursday June 7 and embark on a busy schedule visiting various sponsors and touring the sights around New Plymouth. The Mayor Neil Holdom



Taranaki Rose of Tralee Erin Annabell, Erin is a 26 year old physiotherapist at Taranaki District Health Board

will welcome them to the city, a photographer will tour with the Roses and judges capturing the events and to promote their visit. The events start Thursday with a social fun night and live band at the Good Home. Federal Store for breakfast will start the day on Friday. Kiwi Tours will be their main transport over the weekend.

The Kiser family's Classic cars and a Combi Van from Kombi Krush will drive them to Okurukuru winery for lunch. A visit to Giles Chocolatier and dinner at Peggy Gordon's Celtic bar

will follow before preparing for their first round of onstage interviews with David Marshall at the Plymouth Hotel on Friday night.

The Roses will perform an item and the Ranfurly Shield will be at the event for photo opportunities. Rod Smith will talk about his new book 'Guinness Downunder', donating a copy to the club. Kath Julian has also written a book 'Four brothers went and four came back' and has donated a copy to the NZ Rose winner.

The Roses and their Rosebuds, our future Roses, will have morning tea with the residents of Jean Sandel Retirement village then head to Pukekura Park for High Tea with club patron Josie Hogan and former NZ Roses.

On Saturday afternoon they will have more interviews and prepare for the Rose Selection Ball at the Devon Hotel. The event will be attended by supporters and family from Auckland to Invercargill and all are most welcome to attend. Irish dancers will start

the night's entertainment. After a buffet dinner the Roses will have an interview with MC Peter McDonald before the NZ Rose winner is announced. The NZ winner will travel to Ireland for the International festival in August. To fundraise for the National event Sue Bracken has handmade a beautiful Irish chain quilt valued at \$800, and the winner will be drawn at the Rose Ball. Other raffles will be on sale throughout the weekend including prizes of Butler's chocolates. We thank all those involved in preparing for this event and sponsoring events and gifts. Tickets for the Friday 8th Meet the Roses, which include supper and the Saturday 9th Rose Selection Ball are available phone 06 274 8494 or 027 330 8510 or email tisc.irishclub@gmail.com

2018 NZ Rose Selection Events

7- 10 June New Plymouth

Rose welcome Thurs 7th June from 6.30pm

The Good Home – Live Music & Fun

Meet the Roses Fri 8th June 7pm

Plymouth Hotel - includes Supper \$20pp

Rose Selection Ball Sat 9th June 6.30pm

Devon Hotel Dinner & Entertainment \$85pp

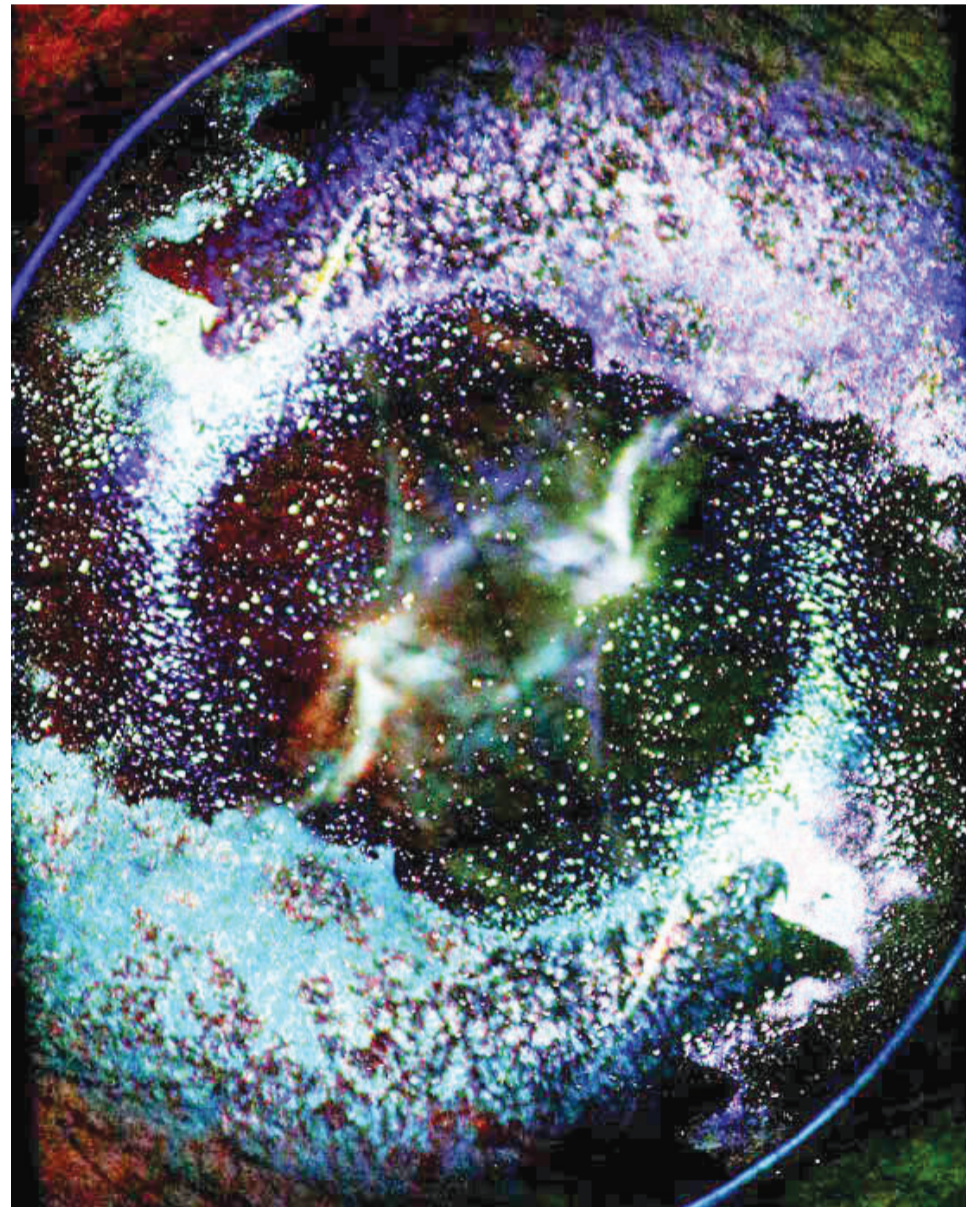
Tickets ph 027 330 8510

Email tisc.irishclub@gmail.com



Taranaki Irish Club

New artist brought to light



Hikari-Connor Smith

Hi there, a beautifully sunny start to June, but a bit chilly down in this part of the world at the start of winter.

Ascendancy - an exhibition by Connor Smith. Connor won this exhibition as a prize in the Emerging Artists competition. Have a look. It's painting with light, but a long, long way from what any of us can do with a camera. Do see it, on tart.co.nz and send him a

message if you can. A word of praise matters a lot when you're starting out.

ICE20, the 20th and the last International Collage Exhibition/Exchange.

I'll miss the excitement of opening the packages, but will enjoy the extra couple of months each year to play in my studio and make my own things.

See last year's ICE19 on outofsight.co.nz.

There are 22 artists who

have already sent their work for ICE20. If you're thinking of being part of it all, aim at having your work arrive in New Zealand by 10th July. It seems that you have to allow a couple of weeks travel time.

Cheers
Dale Copeland

A COMPETITION TO TURN BUSINESS IDEAS INTO GROWING BUSINESSES

idea
summit

TARANAKI

ENTER YOUR IDEA FOR A CHANCE TO WIN
\$10,000 CASH AT WWW.IDEASUMMIT.CO.NZ

Taranaki Idea Summit™ 2018 is a new competition to help anyone with a business idea turn it into an innovative business. There are some fantastic prizes up for grabs, including \$10,000 cash!

Get involved and enter for FREE at
WWW.IDEASUMMIT.CO.NZ

CLOSING DATE FOR ENTRIES 25 JUNE 2018

BROUGHT TO YOU BY



An initiative of New Plymouth District Council

Celebrating Puanga in South Taranaki

The South Taranaki District Council has been working closely with the community to create a programme of free public events to help celebrate the Māori New Year in our district.

Whether stargazing, speaking/learning Te Reo, gardening or interactive music

shows sounds like you – there are events for everyone to enjoy.

“It’s a great opportunity for our community to embrace our culture and heritage – a time of wānanga, to honour ancestors and plant hope for the future,” says South Taranaki District Council

community development advisor Ella Borrows.

“We have compiled a calendar of events for across the district and we encourage you to try something new, to take the opportunity to develop your understanding of Puanga and to have fun.”

Some of the events are;

Puanga Kai Rau Festival at Parihaka (Friday 8 June – Sunday 10 June), Starlab Planetarium (Tuesday 12 June), Puanga Kai Rau – Gardening under the Guidance of the Stars (Friday 15 June), See the Stars (Saturday 16 June), Thank you to South Taranaki Volunteers

(Tuesday 19 June), Cuppa Kōrero (Thursday 21 June) and Power to the Pūoro (Thursday 21 and Friday 22 June).

When Matariki (stars) appear low in the eastern sky, people celebrate the Māori New Year. In Taranaki, we look for Puanga which is

the bright star that can be seen above the three stars in Orion’s belt.

The beginning of Puanga can be seen in the last few days of May every year and the new year is marked at the sighting of the next new moon which occurs during June.

Good Vibrations playing at the Good Home again on June 9



The Good Vibrations Band is a collaboration of Taranaki’s finest musicians spanning the genres and specializing in weddings, private functions and parties. It is the Good Vibrations Band who will be performing at clubs, bars and gigs throughout the region, featuring members of The Blistered Fingers. The Blistered Fingers continue going strong, focusing solely on their original music, and playing as The Blistered Fingers only at all original events.

Visiting New Plymouth? CALL INTO THE GOOD HOME

Steaks, pizzas, salads,
fish and chips, and more!

Delicious desserts!

Great range of cold beers
and wines.

We have all your bases
covered.

Open for brunch, lunch
and dinner.



21 Ariki Street, New Plymouth

Proud supporters of the Coast!

www.thegoodhomenp.co.nz Tel: 06 758 4740

Hawera Repertory Society presents

THE LION THE WITCH AND THE WARDROBE

By C.S. Lewis adapted by Glyn Robbins
Directed by Samantha Turner

22-30 June 2018

Memorial Theatre, Hawera

Tickets on sale from **TicketDirect**
and South Taranaki i-SITE

Hounding the horehound weed

Two moths may be imported to combat the horehound weed, which a recent survey estimates to cost New Zealand dryland farmers almost \$7 million per year.

The Environmental Protection Authority (EPA) is considering an application from a collective of affected farmers – the Horehound Biocontrol Group – to introduce the horehound plume moth and horehound clearwing moth to attack this invasive weed, and is calling for public submissions. The application is supported by the Ministry for Primary Industries' sustainable farming fund.

However, the horehound weed is highly valued as a medicinal herb, and is harvested for that

purpose. A literature review suggests the plant may be beneficial in the treatment of respiratory disorders, diabetes, inflammatory disorders and a wide range of other conditions. Successful biological control could adversely affect the value of the medicinal harvest.

The applicant notes that the New Zealand Association of Medical Herbalists and the Herb Federation of New Zealand both oppose the proposed biological control programme, but stresses that the horehound weed is a serious threat to the viability of some farms. It establishes strongly in hill and high-country lucerne forage crops and is exceptionally hard to control. Herbicide treatments aimed at the horehound weed are said



The Horehound Plume Moth. Photo Angela Marr.

to be highly detrimental to lucerne, and may do more harm than good.

The two moths attack horehound weed in different ways, and have been released successfully in Australia. The larvae of the plume moth feed on horehound leaves, while those of the clearwing moth feed in the roots.

The Horehound Biocontrol Group says that experimental evidence suggests neither moth will persist in or damage any native plant or desirable ornamental plant. Both feed on a narrow range of plants in their native Europe, and this was confirmed in Australia prior to their introduction, it says.

Public submissions on this application open on 29 May 2018 and close on July 11.

Moving towards m.bovis eradication

DairyNZ and the Dairy Companies Association of New Zealand (DCANZ) say they support the government's decision to continue the fight to eradicate the cattle disease Mycoplasma bovis from New Zealand.

"The decision wasn't made lightly and reflects our hope that the disease can be eradicated," says Jim van der Poel, DairyNZ Chair.

"Our farmers have been waiting for almost eleven months on a way forward and part of the challenge has been a lack of certainty about the long-term solution for New Zealand. Today we have that certainty.

"Over 99% of our dairy herds in New Zealand have no signs of this disease, and we want to keep it that way.

"DairyNZ has been actively – and passionately – working on behalf of our

farmers to find a solution. We know that moving towards eradication will be a devastating decision for some, and will mean that thousands of animals will have to be culled.

"This was not an easy decision to make for those reasons, and our hearts and thoughts are with the farmers that have affected herds.

"We are here to support those farmers, and have given a commitment that we will, alongside the Ministry and other sector groups, drive down the driveway of every affected farm to give that support," Mr van der Poel says.

"At the same time, we must also focus on the thousands of farmers and millions of dairy cows that have not been affected by M. bovis. Taking this one chance to eradicate means that we could get rid of this disease

from New Zealand.

"Having this disease can be disastrous for a herd. The animals may get sick and there are significant animal welfare issues – something no farmer wants their animals to go through. There is also an impact on production that has serious ramifications for farmers, the dairy sector and our economy.

"We have had to weigh up all these impacts when making the decision and I'm pleased that we finally have a way forward."

DCANZ chairman Malcolm Bailey says if this opportunity isn't taken, there might not be another chance. Mycoplasma bovis is a disease of cattle. It does not cause illness in humans and has no food safety risk. It is also not considered a disease of relevance to

trade by the World Animal Health Association (OIE). Eradication of Mycoplasma bovis is being sought because it is an animal welfare and production issue which causes illness in cattle, including under infection (mastitis), arthritis, abortion, and pneumonia, he says.

"We recognise that this decision will be hard on those farmers whose cattle have the disease. Ensuring these farmers are looked after and are compensated is a priority. It is important that we also protect the 99% of farmers whose herds are not infected" says Bailey.

"Industry will work collectively, and with MPI, to support those farmers who shoulder a heavy load in securing the best industry-

wide outcome".

Due to its isolated geography, New Zealand has an absence of many of the pests and diseases that are a feature of animal production elsewhere in the world.

"Our relative disease free status is an important factor

in the high standards of animal health and welfare, the low antibiotic use rates, and the high levels of animal productivity from New Zealand's pastoral farming systems" says Bailey. "It is important we do everything we can to protect this".

NZ FARMERS LIVESTOCK

For all your
Livestock requirements
Servicing the Coast

Contact

Tim Hurley - 027 445 1167
Bryan Goodin - 027 531 8511

NZ food safe to eat

According to a recent survey, the New Zealand diet is safe and contaminants are very low – and mostly occur naturally.

The Ministry for Primary Industries released results of the 2016 New Zealand Total Diet Study which tests residues from commonly used agricultural chemicals: insecticides, fungicides and herbicides.

This report tested 301 agricultural chemicals – more than in previous years. All of the exposures in the

diet were very low, and far below levels that would be a food safety risk.

"The levels of agricultural chemicals and contaminants in our diets remain low and most of the latter occur naturally in the environment, so the fact they are showing up in our foods is unavoidable," says Agcarm chief executive, Mark Ross.

MPI sets very conservative limits for residues in food. These are many times below levels that would be a risk to consumers.

The national study, carried out every five years, covers a range of common foods consumed in a typical diet. It's used to assess our overall exposure to chemicals and identifies potential food safety risks.

"These results are unsurprising," says Ross. "Agcarm members work hard to satisfy the stringent requirements set by regulators. They also work with food chain partners to achieve the lowest possible residues in food."

TRACTORVILLE

TRACTOR PARTS FAST AND CORRECT

TRACTOR DISMANTLERS

Lorryland
25 Rugby Road
Tariki, Inglewood



www.tractorville.co.nz

0800 23 23 44 or 027 304 2462

CONCRETE PRODUCTS

Available Now -Troughs – inspection pipes - culvert pipes - lids - bridge decks – box culverts - culvert bases - T/Walls - Manhole Lids – custom made products to order

Kuriger Engineering Ltd - 889 Kaweora Road – Opunake

Call 06 761 8122 Bus - 027 235 6533 A/H

Free events celebrating Literary Awards



Ronald Hugh Morrieson

This year's Ronald Hugh Morrieson Literary Award judges are in town to mark the opening of the competition with free-to-attend workshops and a specialty performance evening.

The Performance Evening is taking place on Thursday 7 June, where Poetry Judge Arini Beautrais will share her poetry (much set in the

Whanagnui area) and Young Adult Author Mary-Anne Scott, an accomplished musician, will entertain with an array of literary songs.

All are welcome to attend this free event 7pm at Hawera LibraryPlus.

All aspiring writers (especially those wanting to enter the competition) are encouraged to attend the free workshops on Saturday 9 June.

The Poetry workshop is in the morning (9am – 12noon) and the Short Story workshop is being held in the afternoon (1 – 4pm), so people can attend both if they are interested.

Spaces are limited to 25 in each workshop – call 0800 111 323 to register.

The Ronald Hugh Morrieson Literary Awards, which opened on Tuesday, honour the work of one

of New Zealand's most preeminent authors, Ronald Hugh Morrieson (1922 – 1972).

Morrieson wrote four novels: a coming of age tale *The Scarecrow* (1963), *Came a Hot Friday* (1964), *Predicament* (published in 1975) and his only contemporary novel *Pallet on the Floor* (1976). All have been adapted for the cinema, the only New Zealand writer to have acquired this achievement. Two short stories were published posthumously, in 1974; *Cross My Heart* and *Cut My Throat* and *The Chimney*.

"I encourage anyone who has wanted to have a go at writing, to put forward a piece – whether it be a

drama script, a short story or poem," says organiser Pam Jones. "You have until August 15 to get your entries in, so put pen to paper, or fingers to the keyboard."

There are five categories in the Awards; The Secondary School Poetry and Short Story categories, the Open section Poetry and Short Story categories and the Secondary School Research Article category – the winner of which receives a one year subscription to the *Taranaki Daily News* and \$500.

Find out more by heading to www.southtaranaki.com, or by visiting your local LibraryPlus.

The Awards are sponsored by Lysaght-Watt Trust.

Business as usual for Village Gallery

The Village Gallery recently held its AGM. Election of Officers: Chairman Lorna Davies, Secretary Donna Hitchcock, Treasurer Bill Davies. Committee Robyn Smaller, Karen Waterson, Sue Morton, Maree Liddington, Margaret Foley.

The 'Walls' Exhibition has been very successful in generating interest, with visitors being very impressed with the fascinating variety of ideas and interpretations of the theme that artists have produced.

Our next exhibition is our usual 'Friends of the Gallery' Mid-Year Exhibition, which



Eltham's Village Gallery.

is always a fascinating mix of media and styles, with our member artists able to enter up to five artworks each.

This is titled 'Art from the Heart'.

Although the Gallery is not part of the Taranaki Arts Trail this year, we will open on Sunday 10th to attract art lovers who are passing through Eltham on their way to visit some of the studios that are open for the weekend. Bring in your visitors to see *Art from the Heart*, and follow us on Facebook; Village Gallery Eltham NZ.

Maree Liddington



CoastalCare

Haumaru ki Tai Health and Community Centre
Delivering essential community health and social services now and into the future....

CoastalCare
Haumaru ki Tai
Health and Community Centre
Haumaia ki runga, Hauora ki raro

DID YOU KNOW?

CoastalCare offers for hire, quiet, private, well-appointed rooms for meetings, training opportunities and social gatherings. This will seat up to 60 people or it has the flexibility to be divided into two smaller rooms. The facilities include a lounge area & kitchenette for self service of coffees and tea

Some of the regular services we currently have running are:

COASTAL PRINTERS
Wednesday and Friday 9am - 5pm

TAYLOR DENTAL PRACTICE
Offering full dental services every Thursday from hygiene treatments to dentures

LISA KEEN - AUDIOLOGY
Every Wednesday

ACUPUNCTURE CLINIC
Every Thursday afternoon.

TAI CHI - NIGEL CLIFFE
Every Thursday, 9am-10am

BUDGET ADVICE
By appointment

TARANAKI PODIATRY
Every 3rd Wednesday

HAUMIRI MASSAGE
Every 4th Thursday

COUNSELLING
Various providers and specialties including, relationships, drugs, alcohol, quit smoking, change support, family violence and anger management

DAIRY NZ
once a month course

PERMANENTLY RESIDING IN THE BUILDING ARE:

**OPUNAKE PHARMACY,
OPUNAKE MEDICAL CENTRE,
ST. JOHNS AMBULANCE,
PLUNKET,
HEALTH BOARD SERVICES,
COASTAL PRINTERS**

**CONTACT:
ARETHA LEMON or
ELAINE SPENCER,
Facility Managers on 06 761 8488**

EVERYBODY'S THEATRE

Opunake - MOVIES - BOUTIQUE THEATRE – HIRE
For information email: everybodystheatre@gmail.com or check facebook- Everybody's Theatre
Check out our website at www.everybodystheatre.co.nz – Phone 027 3837926
JUNE 2018

Lollies, Popcorn, Ice-creams, Chocolate bars, Coffee & Tea For Sale	No Eft-Pos	Adults \$10, Students 4-16yrs \$8, Under 4 free	Senior Citizens \$8. ID required for all R movies
	SOLO: A STAR WARS STORY Action Adventure Fantasy 2hr 15mins M: Violence Through a series of daring escapades deep within a dark and dangerous criminal underworld, Han Solo meets his mighty future copilot Chewbacca and encounters the notorious gambler Lando Calrissian. Fri 8 th Jun 7pm Sun 17 th Jun 7pm Fri 22 nd Jun 7pm		DEADPOOL 2 Comedy Action 1hr 59mins R16: Graphic violence, sexual references & offensive language Marvel's motormouth mercenary is back! When a super soldier arrives on a murderous mission, Deadpool is forced to think about friendship, family and what it really means to be a hero. Sun 10 th Jun 7pm Wed 13 th Jun 7pm Sat 16 th Jun 7pm
	PETER RABBIT Adventure, Animated, Comedy, Kids & Family, Fantasy 1hr 34mins PG: Violence Based on characters from Beatrix Potter's beloved books, Peter Rabbit's feud with Mr McGregor escalates as they compete for the affections of an animal lover who lives next door. Sat 9 th Jun 1pm		THE BOOKSHOP Drama 1hr 53mins PG: Coarse language Set in a small town in 1959 England, it is the story of a woman who decides, against polite but ruthless local opposition, to open a bookshop, a decision which becomes a political minefield. Fri 15 th Jun 7pm Wed 20 th Jun 1pm Sun 24 th Jun 1pm
	PADDINGTON 2 Animation Comedy 1hr 43mins G Paddington, now happily settled with the Brown family and a popular member of the local community, picks up a series of odd jobs to buy the perfect present for his Aunt Lucy's 100th birthday, only for the gift to be stolen. Sat 23 rd Jun 1pm		DUCK DUCK GOOSE Animation, Comedy, Kids 1hr 22mins PG Peng is a freewheeling bachelor goose who'd rather do anything than practice for the upcoming migration. He thinks he's better than everyone else and spends his time attempting crazy stunts at even crazier speeds. Sat 16 th Jun 1pm Sat 30 th Jun 1pm
	EDIE Drama 1hr 42mins M Offensive Language After her controlling husband dies, an elderly woman embarks on a trip to fulfill her longtime dream of climbing a mountain in the Scottish Highlands. 83 year old Edie believes that it is never too late. Wed 20 th Jun 7pm Wed 27 th Jun 1pm		OCEANS 8 Action Crime Comedy 1hr 50mins M: Offensive Language Upon her release from prison, Debbie, the estranged sister of legendary conman Danny Ocean, puts together a team of unstoppable crooks to pull off the heist of the century. Their goal is New York City's annual Met Gala, and a necklace worth in excess of 150 million dollars. Sat 23 rd Jun 7pm Fri 29 th Jun 7pm
Wed	Fri	Sat	Sun
	8 Solo – Star Wars - 7pm	9 Peter Rabbit - 1pm Tully - 7pm	10 Deadpool 2 - 7pm
13 Last Flag Flying - 1pm Deadpool 2 - 7pm	15 The Bookshop - 7pm	16 Duck Duck Goose 1pm Deadpool 2 - 7pm	17 Solo – Star Wars 7pm
20 The Bookshop - 1pm Edie - 7pm	22 Solo – Star Wars - 7pm	23 Paddington 2 - 1pm Oceans 8 - 7pm	24 The Bookshop - 7pm

Experience the 1840s journey with Puke Ariki

The sights, sounds and smells – dirty linen and vomit included – of the voyages of the first organised Pākehā settlers to New Plymouth are being brought to life in a new exhibition by NPDC's Puke Ariki.

The Plymouth Company exhibit, opening soon in the Taranaki Life Gallery has taken two years of planning to put together and captures what it was like to make the long sea journey from England to New Zealand/Aotearoa.

"The attention to detail put into the exhibition by our team of curators is just amazing," says Puke Ariki Manager Kelvin Day.

"We're trying to tell the story of what that voyage was like for the 1000 or so settlers who came over from Devon and Cornwall to a new life in Taranaki.

"What I love about this exhibit is it has given us the chance to experiment with new ideas and introduce new technology while working with experts from Taranaki, New Zealand and across the globe."

Visitors will get the chance to sample some voyage smells via an interactive display. The odour experience will include rope and tar, dirty linen, musty and vomit sourced from AromaPrime in the UK.

Taranaki videographer Keith Finnerty filmed rats which will be projected onto the floor – plagues of rats were a major problem for the settlers. The rats had to be trained in Wellington to run in the right direction.

Staff sailed on the *R. Tucker Thompson* in the Bay of Islands to recreate the movement of a sailing vessel.



Puke Ariki exhibitions installer Tamara Lewis working on The Plymouth Company exhibit.

An Auckland company has replicated the meals the Pākehā settlers would have 'enjoyed', complete with a pewter dinner plate.

The exhibit includes many artefacts from the Puke Ariki collection, including items brought over by the settlers such as a 200-year-old doll. Also on show is an enlarged copy of a significant artwork, housed in Germany that shows the Ngāmotu foreshore in 1841.

The settlers gave up everything for the chance of a new life, often driven by desperation and poverty as well as the promise of new opportunities away from England's rigid class

structure.

The journey took months and the first brave souls who set off in 1840 faced storms, sickness and death. The *William Bryan* arrived at

Ngāmotu on 31 March 1841, bringing 134 Britons who would lay the foundations for New Plymouth in a new land amongst Māori. A further five ships followed over several

years.

To get free passage (free tickets) steerage passengers on the ships had to be vaccinated against smallpox and to provide 'the most

satisfactory testimonials as to their qualifications, character and health'.

Rats ran riot in New Plymouth during the first years of the settlement. When the rodents swarmed people waged war on them using gin traps, snares and poison. Settler Josiah Flight recorded personal kills in his diary. His highest daily tally was 58.

Once they settled in New Plymouth women began marrying earlier than in England, with nearly half married before they were 20. The new generation had a birth rate of an average of 10.4 children, rather than their mother's average of 8.3.

Puke Ariki opened on 15 June 2003. It is the world's first purpose-built, integrated museum, library and visitor information centre.

Puke Ariki has three long-term galleries (Takapou Whāriki, Taranaki Naturally and the Taranaki Life) and components of these get changed out regularly.

The temporary exhibition space shows touring exhibitions that are either curated in-house or brought in from other museums. Te Pua Wānanga o Taranaki/Taranaki Research Centre is also housed at the site.

Thompson's Hut at Puke Ariki

Visitors to the Thompson's Hut can take a step back in history as the revamped attraction opens its door for the first time ever at NPDC's Puke Ariki.

The hut, which was built around 1920 and gifted to

the museum in 1977, has had a makeover to create an interactive experience on what life was like in Taranaki in the 1930s.

Situated in the Taranaki Life Gallery, visitors had previously only been able to stand at the entrance to check

out the interior but the hut has now been opened up to the public.

The refreshed interior includes a digital projection photo album. This interactive display allows visitors to read about local people and their stories. The hut also includes

replicas of 1930s furniture built in-house by Puke Ariki staff based on items in the collection.

The hut is made from tōtara and was built as a station-hand's quarters on Bill Thompson's farm in Tāhora.

Have a break over some Golf



Sheep graze peacefully at the Pungarehu Golf Club.

With Gypsy Day over and calving yet to start the Pungarehu Golf Club is offering an opportunity to get off the farm before the "madness descends again."

The Pungarehu Golf Club

is holding a Multi Sponsored Tournament on Wednesday June 20. Just get a team of four to register for the Ambrose before the 9.30am mass tee-off. There is a \$20 entry fee per person and all golfers

and non-golfers are welcome.

It will be a great opportunity to have a get together with mates, a day to get off the farm before the madness descends again, or a day out of the office or workshop for

a fun day out. It's also a great time to welcome new people to the community.

Entries to: Alan Crowley. 06 763 8255 or 0274 489140. No Eftpos

QUIZ NIGHT

Opunake Cottage Rest Home Fundraiser

To be held at the
Opunake Bowling Club
Sat June 16 from 7pm
\$80 per team, 6 person teams
Cash Bar, Supper provided
Ph 06 761 8009

Pungarehu Golf Club

Multi Sponsored Tournament

Wednesday June 20
Ambrose - Teams of 4
Register your team by 9.30am
Mass tee off
\$20 entry fee p.p.

All Golfers and Non Golfers welcome.
A good day to get off the farm, out of the office or workshop for a fun day out.

Entries to:
Alan Crowley
06 763 8255 or 027 4489140